

Polish mid-century design

1957

CK57

2022

designed by Czesław Knothe



VZOR

CK57

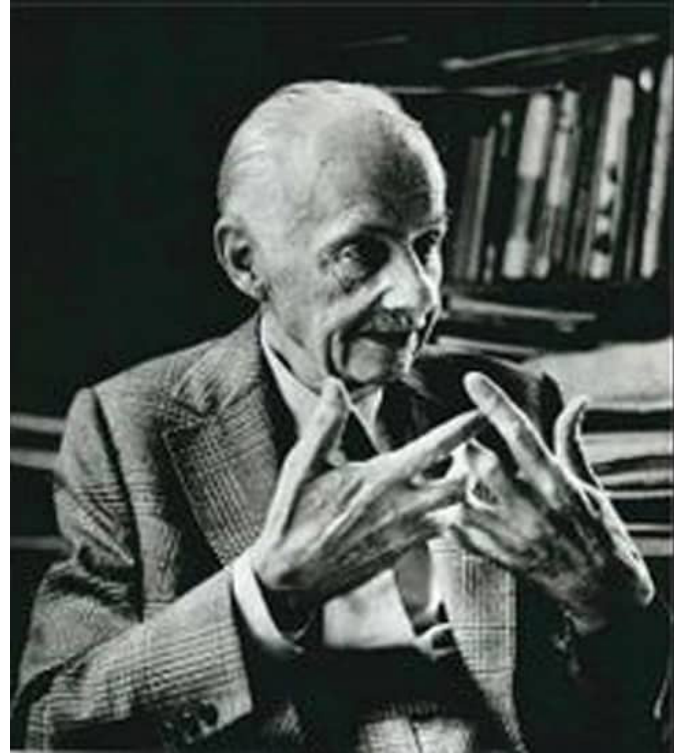
CK57 is one of the flagship designs of Czesław Knothe, an outstanding Polish interior and furniture designer, a long-standing member and later president of the ŁAD Artists' Co-operative, an institution bringing together icons of Polish modernist design. Like every piece of his furniture, it combines aesthetics with the highest quality of workmanship and maximum functionality. These qualities made Czesław Knothe's designs popular and recognised, not only in his own country, but also in other countries.



The design of CK57 was created in the late 1950s, becoming a permanent part of the canon of Polish Modernism. It combines in a harmonious way the designer's two favourite materials: wood and fabric, which, contrasting in texture, complement each other. The shape of the furniture is very balanced, juxtaposing a large, straight seat and slender, rounded supports. This armchair will perfectly fit into many types of interiors, offering maximum comfort, a simple yet aesthetically pleasing finish and the highest quality materials.

CZESŁAW KNOTHE

Czesław Knothe was born in 1900 in Gorłówka in what is now Ukraine. At the age of 18, he began to study at the Ukrainian Academy of Fine Arts in Kiev, but only a few years later - from 1923 to 1937, with interruptions - he studied interior design and painting at the School of Fine Arts in Warsaw. During the interwar period, he was involved in designing furniture and interiors, and from 1926 became a member of the Cooperative of Artists of the „Ład” Co-operative of Visual Artists. From 1938, he became its director - until 1944.



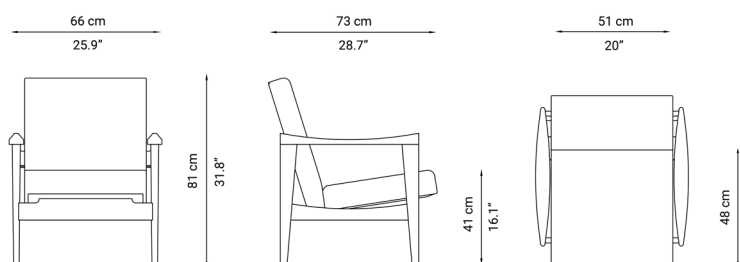
„In order for a piece of furniture to be successful, it must meet three basic conditions: purposeful design, maximum functionality and, of course, have aesthetic qualities.”

-Czesław Knothe

After the war, from 1951 to 1953, he became president of „Ład”. One of Knothe's greatest undertakings is considered to be the set of furniture for the Palace of Culture and Science in Warsaw, which he designed in the years 1953-1955. He repeatedly stressed that a piece of furniture, to be successful, must meet three basic conditions: it has to be of purposeful design, have maximum functionality and be aesthetically pleasing. His most important furniture can confidently be described as a perfect combination of these three assumptions.



CK57



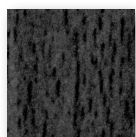
Height: **81 cm/31.8"**
Width: **66 cm/25.9"**
Depth: **73 cm/28.7"**
Weight: **12.5 kg**

Seat height: **41 cm/16.1"**
Seat depth: **48 cm/18.8"**
Pack size: **69x63x59cm**

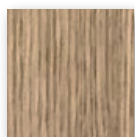
frame colours



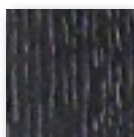
Beech
natural



Beech
black



Oak
natural



Oak
black

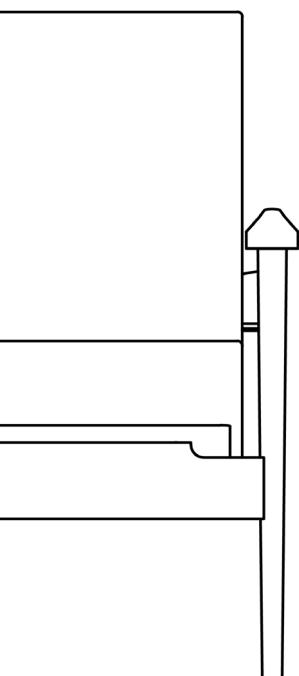
types of upholstery



Velvet
(Henry FR)*



Wool
(Synergy)*

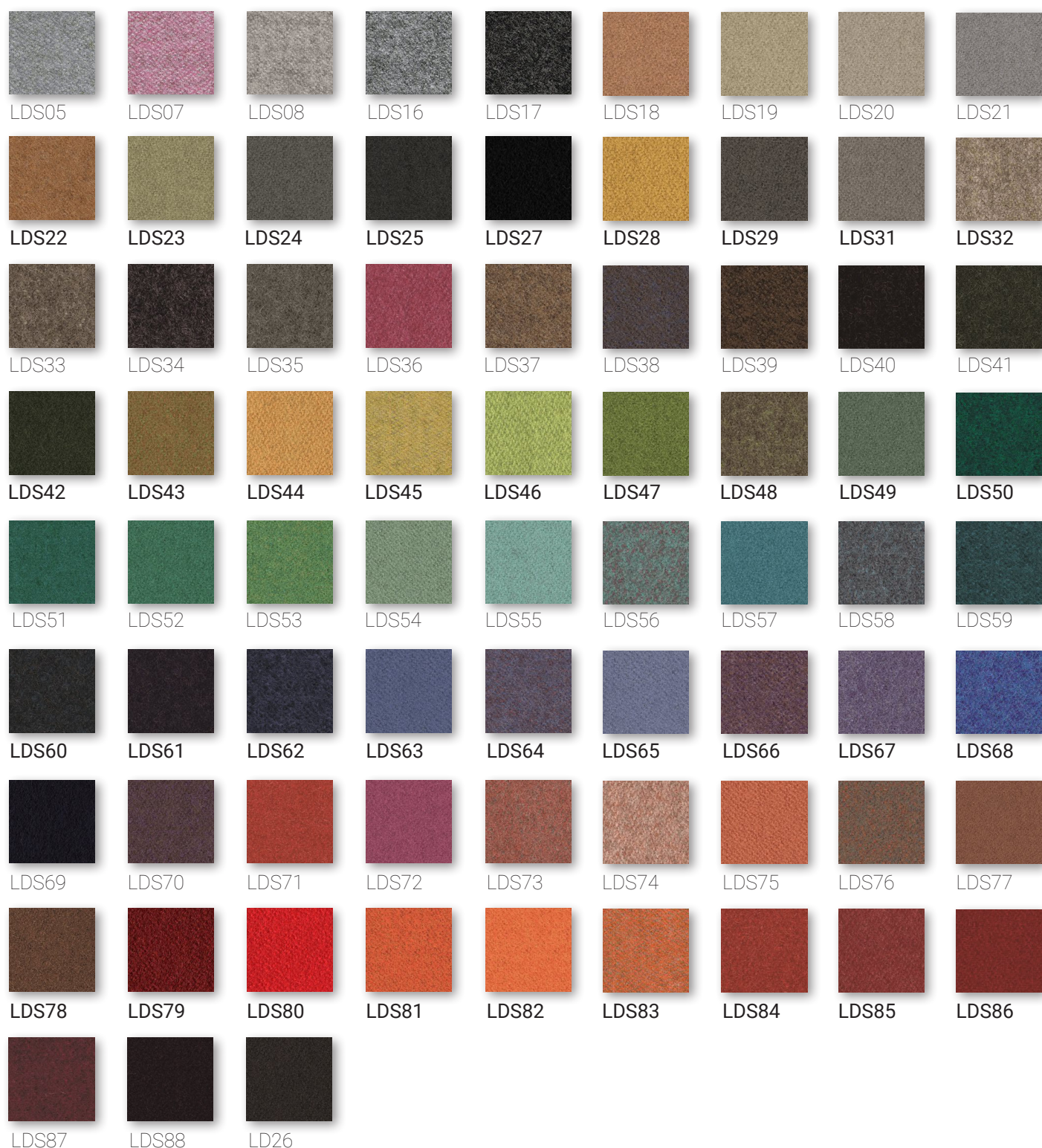


* Full colour palettes for Henry FR and Synergy fabrics can be found on pages 5 and 6.

Henry FR - composition: 100% Polyester FR, weight: 325g/m2; resistance: 80,000 Martindale cycles.



Synergy - composition: 95% wool, 5% polyamide, weight: 400g/m²; resistance: 100,000 Martindale cycles.



Interior Post | Jyllingevej 48 | DK-2720 Vanløse | Tlf. +45 3110 0672 | www.d-just.dk

VZOR