

Price list **SOLUTIONS**

FURNITURE AND SEATING



100% ACTIU MELAMINE
PRODUCTS WITH ZERO
FORMALDEHYDE AS
STANDARD

California 93120
Compliant Formaldehyde Phase 2

Actiu reserves the right to carry out the amendments in technical, dimensions and finish information of the products detailed in this document. Please double check with customer service before order confirmation.

FINISHES

— By Actiu —

FABRICS GROUP 0

- Fabric "AT"/"T"03

FABRICS GROUP 1

- Fabric "BU"/"U"06
- Fabric "AE"08
- Fabric "AI"10
- Fabric "AO"12
- Technical Mesh "AL"14
- Fabric "AN"16
- Fabric "AY"18

FABRICS GROUP 2

- Fabric "BV"/"V"21
- Fabric "AD"/"D"23
- Fabric "CM"/"M"25
- Fabric "CM"/"M"27
- Fabric "BC"29
- Technical Mesh "AS"/"S"31
- Technical Mesh "AH"/"H"33

FABRICS GROUP 3

- Tejido Técnico "CQ"/"Q"36
- Technical Mesh "AR"/"R"38
- Fabric "FA"/"A"40
- Fabric "AM"42
- Fabric "AC"44

FABRICS GROUP 5

- Fabric "AV"47
- Fabric "FR"49
- Fabric "AP"51
- Fabric "BE"53
- Fabric "GP"/"P"55

FABRICS GROUP 6

- Fabric "FC"58

FABRICS GROUP 7

- Fabric "FS"61
- Fabric "FH"63

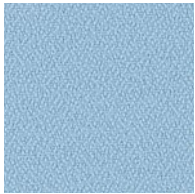
OTHER FINISHES

- Leather Fac66
- Beech Lacquered Plywood68
- Poliurethane70
- Thermoplastic72
- **ECO** Thermoplastic74
- Metal76
- Cleaning and protection78

FABRICS
GROUP
0

FABRIC "AT"/"T"

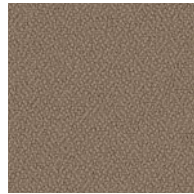
T - 100% POLYESTER® NON METALLIC DYESTUFFS



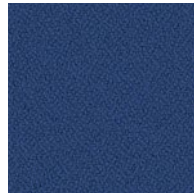
BS A099 T61



BS A755 T37



BS G132 T27



BS A005 T89



BS A462 T77



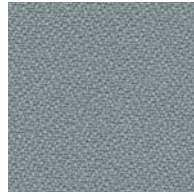
BS FR 904 T70



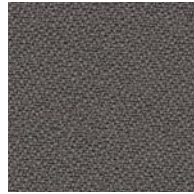
BS A026 T87



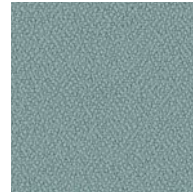
BS A105 T85



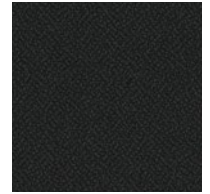
BS 502 T64



BS FR 1801 T84



BS A301 T58



BS A009 T82

It is strongly recommended to read the technical specifications before choosing the upholstery.



TECHNICAL SPECIFICATIONS - FABRIC "AT"/"T" BASIC F.R. - EXIT FABRICS

Sectors	Contract Office Leisure Decoration Home	
Applications	Armchairs, Chairs, Sofas, Stools, Puffs, Retail, Leather, Office furniture, Home furniture, Screens, Acoustic panels, Curtains, Decoration accessories	
Description	Basic is a fire-resistant crepe fabric made of 100% polyester. Versatile and functional, this is a popular collection for upholstering office furniture (chairs, dividers, seats, etc.). With a range of 58 colours in the catalogue and the possibility of creating custom colours, Basic F.R is offered as an optimal solution.	
Features	Flame retardant Indoor use High resistance to abrasion Stretch Eco-clean optional Acoustic absorption Long durability	
Composition	Polyester	100%
Width	gr/m ² ± 5% gr/ml ± 5%	335 470
Weight	cm (+/- 2%)	140
Long	meters (+/- 10%)	45
Abrasion resistance	EN ISO 12947-2 Martindale cycles	100.000
Pilling	EN ISO 12945-2 (scale 1-5; 5 best value)	4-5
Colour fastness to light	EN ISO 105-B02 Method 2 (scale 1-8; 8 best value)	5-6
Colour fastness to rubbing	EN ISO 105-X12 Dry / Wet	4 / 4
Tear resistance	EN ISO 13937-3 Warp / Weft	140 N / 110 N
Acoustic absorption	EN ISO 10534-2 Acoustic absorption peak	0,9
Flammability	UE: EN 1021 1/2 UK: BS 5852 0 UK: BS 7176 Low Hazard USA: CAL TB 117 Section 1 USA: NFPA 260 Class 1 Regulation n° 118 UNECE Annex 6 IMO MSC.307 (88) Annex I Part 8 Flammability performance is dependent on foam used.	
Maintenance	Vacuum regularly. In case of stains, use a damp cloth with neutral soap suitable for cleaning of upholstery products. We would be delighted to attend to you if you have any doubt that may arise regarding this or other information.	
Colour matching	Variations can occur from one tint to another (3%)	
Subject to changes and colour differences		

In case a white or light colour fabric has been chosen, some clothing items (especially, but not only, dark fabrics and jeans) could transfer their colour to the coated fabrics. This can also be the case in the opposite case, where upholstery can transfer its colour to light-coloured garments. This happens more with dampness and higher temperatures and is irreversible. ACTIU informs the customer that the choice of upholstery is the customer's responsibility.

ACTIU reserves the right to make technical modifications along with changes to measurements and finishes as it deems fit. It is recommended that you verify any material before making an order.

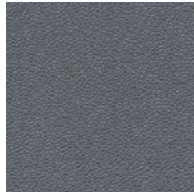
FABRICS
GROUP
1

FABRIC "BU"/"U"

87% COATING: PVC
5% TEXTILE: CO
8% TEXTILE: PES



10019 U12



01150 U14



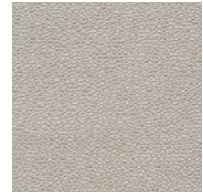
02610 U15



02640 U17



02618 U19



02641 U20



04016 U21



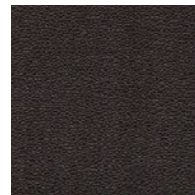
09596 U22



09597 U23



02613 U24



02608 U25

It is strongly recommended to read the technical specifications before choosing the upholstery.



**TECHNICAL SPECIFICATIONS FABRIC "BU"/"U"
LAGUNA - MONTEIRO FABRICS**

Material	Coating: PVC	87%
	Textile: CO	5%
	Textile: PES	8%
Weight	g/m ² - DIN 53352	660
Width	cm	137 - 140
Thickness	mm	0,90 - 1,10
Abrasion resistance	Cleaning ISO 5470-2 (Martindale cycles)	100.000
Flammability	Rub gently with damp cloth or sponge. Do not use multi-purpose products	
	EN1021 1&2	
	FMVSS302	
	UNI 9175 1.IM,	
	NF P 92-507 - M2	
Antibacterial / antifungal	Reg. N 118: Annex 6,7	



Subject to changes and colour differences

In case a white or light colour fabric has been chosen, some clothing items (especially, but not only, dark fabrics and jeans) could transfer their colour to the coated fabrics. This can also be the case in the opposite case, where upholstery can transfer its colour to light-coloured garments. This happens more with dampness and higher temperatures and is irreversible. ACTIU informs the customer that the choice of upholstery is the customer's responsibility.

ACTIU reserves the right to make technical modifications along with changes to measurements and finishes as it deems fit. It is recommended that you verify any material before making an order.

FABRIC "AE"

AE - 100% POLYESTER®

GROUP
1



Task seating



Soft seating



Cigarette & Match



Washable



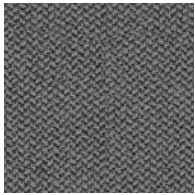
Bleach cleanable



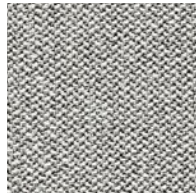
Acoustic



Medium Hazard



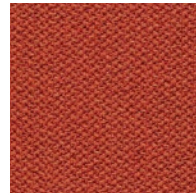
CSE13 AE14



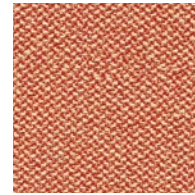
CSE45 AE16



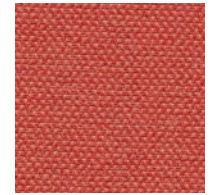
CSE01 AE21



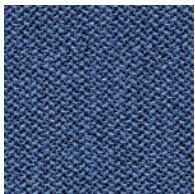
CSE29 AE92



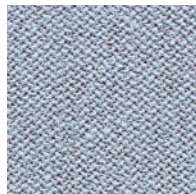
CSE25 AE82



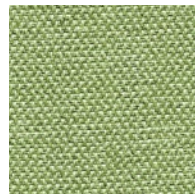
CSE26 AE84



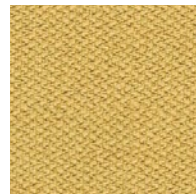
CSE42 AE69



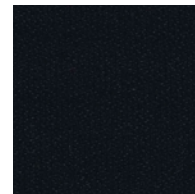
CSE39 AE62



CSE34 AE44



CSE03 AE37



CSE14 AE08

It is strongly recommended to read the technical specifications before choosing the upholstery.



TECHNICAL SPECIFICATIONS - FABRIC "AE" ERA - CAMIRA

Sectors	Contract Office	
Environment	Certified to OEKO-TEX® Standard 100 Certified to Indoor Advantage™ Gold Non metallic dyestuffs	
Composition	Polyester	100%
Weight	gr/m2 ± 5%	320
	gr/ml ± 5%	448
Width	cm (+/- 2%)	140
Abrasion resistance	Heavy duty / 10 year guarantee Independently certified to ≥100,000 Martindale cycles	≥100,000
Colour fastness to light	EN ISO 105-B02 Method 2 (scale 1-8; 8 best value)	5
Colour fastness to rubbing	EN ISO 105-X12 Dry / Wet	4 / 4
Bleach Cleanable	ISO 105 E03 colour change 4 for dilution factor 1:4 chlorine solution	
Acoustic Properties	Acoustically transparent, acoustic graphs available upon request.	
Inflamabilidad	EN 1021 - 1 (cigarette) EN 1021 - 2 (match) BS 7176 Low Hazard EN 13501-1 Adhered Class B, sl, d0 EN 13501-1 Un-adhered Class C, sl, d0 Optional: Please specify when ordering: BS 5852 Ignition Source 5 with EnviroFlam5 BS 7176 Medium Hazard with EnviroFlam5 The Furniture and Furnishing (Fire Safety) Regulations 1988 (UK domestic cigarette and match) with EnviroFlam5 Note: Flammability performance is dependent on components used. Our certificates show what substrates have been used in our tests. For composite tests customers must ensure their complete furniture meets the necessary standards.	
Cleaning	Vacuum regularly. Wipe with a damp cloth using a proprietary upholstery shampoo/soap. For deeper cleaning use steam, bleach, alcohol or professionally dry clean. Can be washed at 60°C. Full details can be found in our cleaning and disinfection guide.	
Subject to changes and colour differences		



In case a white or light colour fabric has been chosen, some clothing items (especially, but not only, dark fabrics and jeans) could transfer their colour to the coated fabrics. This can also be the case in the opposite case, where upholstery can transfer its colour to light-coloured garments. This happens more with dampness and higher temperatures and is irreversible. ACTIU informs the customer that the choice of upholstery is the customer's responsibility.

ACTIU reserves the right to make technical modifications along with changes to measurements and finishes as it deems fit. It is recommended that you verify any material before making an order.

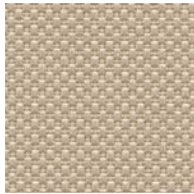
FABRIC "AI"

AI - 100% POLYESTER®

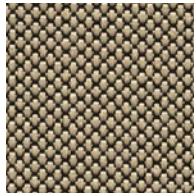
GROUP
1



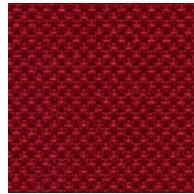
4037 AI90



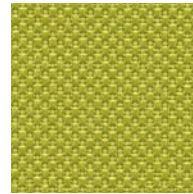
1010 AI23



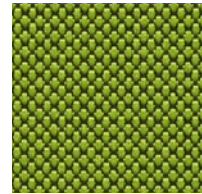
1510 AI25



4017 AI89



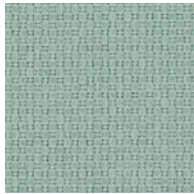
7025 AI42



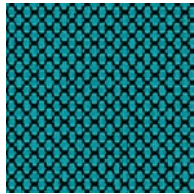
7541 AI44



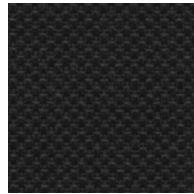
6598 AI66



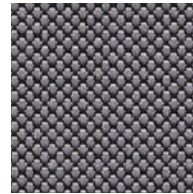
7045 AI58



6526 AI53



8033 AI08



8532 AI13

It is strongly recommended to read the technical specifications before choosing the upholstery.



TECHNICAL SPECIFICATIONS GROUP "AI" RADIO - FIDIVI

Material	polyester FR	100%
Weight	gr/m ² ± 5% (EN 12127)	560
	gr/ml ± 5% (EN 12127)	400
Width	cm ± 2%	140
Abrasion resistance	rubs - EN ISO 12947-2 (Martindale) ± 10%	80,000
Piling	scale 1-5, max. 5 - EN ISO 12945-2	5
Colour fastness to light	scale 1-8, max. 8 - EN ISO 105 - B02 (Xenotest)	6
Colour fastness to rubbing	scale 1-5, max. 5 - EN ISO 105X12 (wet/dry) (Crockmeter)	4-5/4-5
Cleaning	Wash or dry cleaning P (W)	



Flammability	UNI 9174 - 8456 Class C1 UNI 9175 Class 1 IM DIN 4102 Class B1 NF 92501-7 Class M1 NF D 60013 Class AM18 EN 1021-1 & 2 BS Crib 5 BS 7176 Class Medium Hazard EN 13773 Class 1 OENORM 3800-1 Class B1,Q1,TR1 California TB117 USA NFPA 701 USA NFPA 260 Will also pass other flammability standards. Flame retardant performance is dependent upon the foam used
--------------	--

Environment	Certificado de OEKO-TEX® Standard 100
-------------	---------------------------------------

Subject to changes and colour differences



In case a white or light colour fabric has been chosen, some clothing items (especially, but not only, dark fabrics and jeans) could transfer their colour to the coated fabrics. This can also be the case in the opposite case, where upholstery can transfer its colour to light-coloured garments. This happens more with dampness and higher temperatures and is irreversible. ACTIU informs the customer that the choice of upholstery is the customer's responsibility.

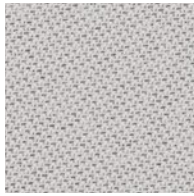
ACTIU reserves the right to make technical modifications along with changes to measurements and finishes as it deems fit. It is recommended that you verify any material before making an order.

FABRIC "A0"

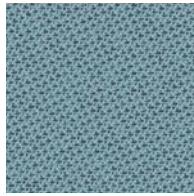
A0 - 99% POST-CONSUMER RECYCLED POLYESTER® / 1% POLYESTER®



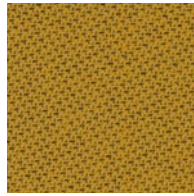
60999 A008



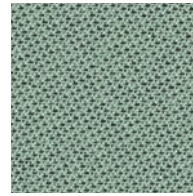
60122 A016



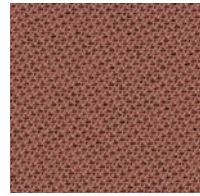
66185 A062



62057 A034



67089 A059



64210 A090

It is strongly recommended to read the technical specifications before choosing the upholstery.



**TECHNICAL SPECIFICATIONS GROUP AO
TONAL - GABRIEL**

Material	Post-consumer recycled polyester Polyester	99% 1%
Weight	2490: lin. metre aprox. grams 2495: lin. metre aprox. grams	315 385
Width	2490 - cm 2495 - cm	140 170
Abrasion resistance	rubs - EN ISO 12947-2 (Martindale) double rubs wyzenbeek (ASTM D4157-07) (heavy duty upholstery)	100.000 100.000
Piling	scale 1-5, max. 5 - EN ISO 12945-2	4-5
Colour fastness to light	scale 1-8, max. 8 - EN ISO 105 - B02	6 - 8
Colour fastness to rubbing	scale 1-5, max. 5 - EN ISO 105X12 (wet/dry)	4-5/4-5
Cleaning	Wash or dry cleaning P (W) Felicity is made of polyester which is a material suited for environments with special requirements for cleaning.	
	 60°C shrinkage máx. 2,5%.	
US ACT	ASTM D4157-07 Wyz abrasion (heavy duty) 100k ASTM D3511 Pilling AATCC 16 Light fastness AATCC 8 o 116 Wet/dry crocking CA TB 117-2013 ASTM E 84 Class I	PASS PASS PASS PASS PASS PASS
	Abrasion test results exceeding ACT Performance Guidelines are not an indicator of product lifespan	
Acoustic test air flow resistance	EN 29053 & ISO 9053-1 (airflow resistance)	
Flammability	CA TB 117-2013 ASTM E 84 Class I BS EN 1021 1&2 Cigarette and Match BS EN 1021-1 Cigarette BS 476 Part 7 class I DIN EN 13501-1 B-s1,d0(glued) Will also pass other flammability standards. Flame retardant performance is dependent upon the foam used. Contains no flame retardant chemicals.	
Environment	STANDARD 100 by OEKO-TEX® EU Ecolabel	

Subject to changes and colour differences



In case a white or light colour fabric has been chosen, some clothing items (especially, but not only, dark fabrics and jeans) could transfer their colour to the coated fabrics. This can also be the case in the opposite case, where upholstery can transfer its colour to light-coloured garments. This happens more with dampness and higher temperatures and is irreversible. ACTIU informs the customer that the choice of upholstery is the customer's responsibility.

ACTIU reserves the right to make technical modifications along with changes to measurements and finishes as it deems fit. It is recommended that you verify any material before making an order.

FABRIC "AL"

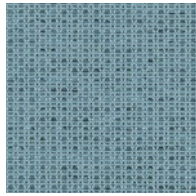
AL - 99% POST-CONSUMER RECYCLED POLYESTER® / 1% POLYESTER®



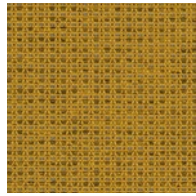
60999 AL08



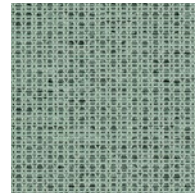
60122 AL16



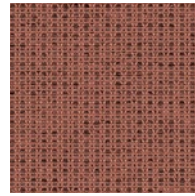
66185 AL62



62057 AL34



67089 AL59




64210 AL90

It is strongly recommended to read the technical specifications before choosing the upholstery.



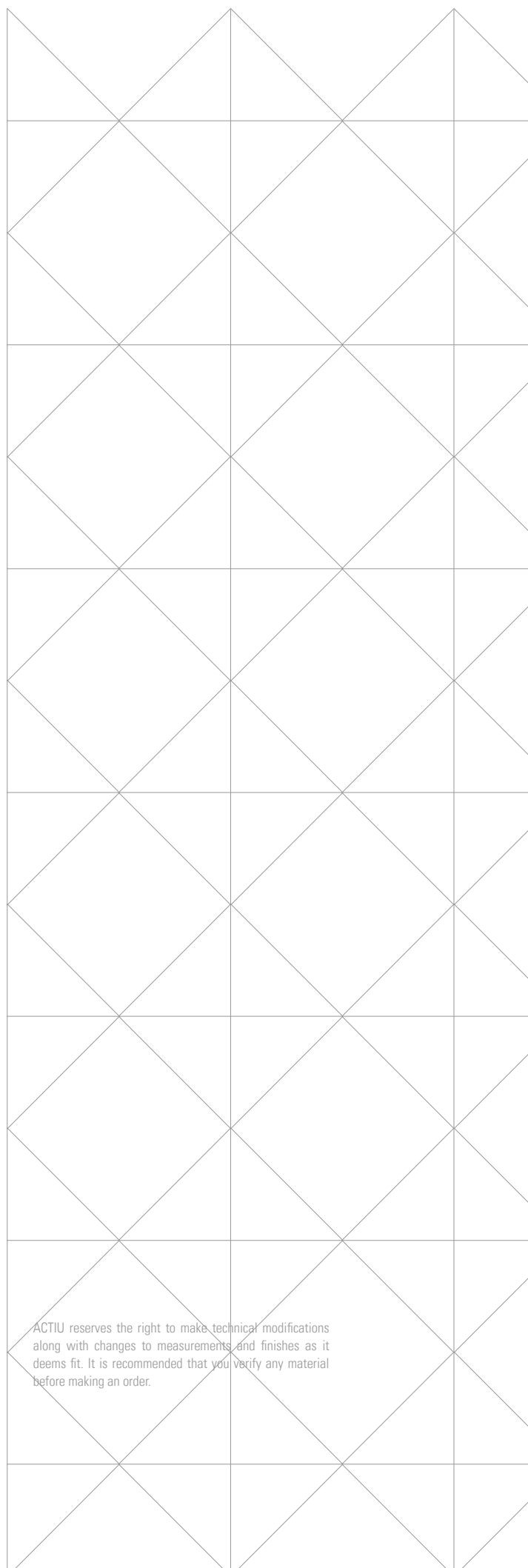
**TECHNICAL SPECIFICATIONS GROUP AL
TALE - GABRIEL**

Material	Post-consumer recycled polyester Polyester	99% 1%
Weight	lin. metre aprox. grams	365
Width	cm	140
Abrasion resistance	rubs - EN ISO 12947-2 (Martindale) double rubs wyzenbeek (ASTM D4157-07) (heavy duty upholstery)	100.000 100.000
Piling	scale 1-5, max. 5 - EN ISO 12945-2	4-5
Colour fastness to light	scale 1-8, max. 8 - EN ISO 105 - B02	6 - 8
Colour fastness to rubbing	scale 1-5, max. 5 - EN ISO 105X12 (wet/dry)	4-5/4-5
Cleaning	Wash or dry cleaning P (W) Felicity is made of polyester which is a material suited for environments with special requirements for cleaning.	
	 60°C shrinkage máx. 2,5%.	
US ACT	ASTM D4157-07 Wyz abrasion (heavy duty) 100k ASTM D3511 Pilling AATCC 16 Light fastness AATCC 8 o 116 Wet/dry crocking CA TB 117-2013	PASS PASS PASS PASS PASS
	Abrasion test results exceeding ACT Performance Guidelines are not an indicator of product lifespan	
Flammability	BS EN 1021-1 Cigarette BS EN 1021 1&2 Cigarette and Match CA TB 117-2013 Will also pass other flammability standards. Flame retardant performance is dependent upon the foam used. Contains no flame retardant chemicals.	
Environment	STANDARD 100 by OEKO-TEX® EU Ecolabel	

Subject to changes and colour differences



In case a white or light colour fabric has been chosen, some clothing items (especially, but not only, dark fabrics and jeans) could transfer their colour to the coated fabrics. This can also be the case in the opposite case, where upholstery can transfer its colour to light-coloured garments. This happens more with dampness and higher temperatures and is irreversible. ACTIU informs the customer that the choice of upholstery is the customer's responsibility.



ACTIU reserves the right to make technical modifications along with changes to measurements and finishes as it deems fit. It is recommended that you verify any material before making an order.

FABRIC "AN"

AN - 100% POLYESTER®

GROUP
1



8033

AN08

It is strongly recommended to read the technical specifications before choosing the upholstery.



TECHNICAL SPECIFICATIONS GROUP "AN" ONE - FIDIVI

Material	polyester FR	100%
Weight	gr/m2 ± 5% (EN 12127)	525
	gr/ml ± 5% (EN 12127)	350
Width	cm ± 2%	150
Abrasion resistance	rubs - EN ISO 12947-2 (Martindale) ± 10%	100.000
Piling	scale 1-5, max. 5 - EN ISO 12945-2	5
Colour fastness to light	scale 1-8, max. 8 - EN ISO 105 - B02 (Xenotest)	6
Colour fastness to rubbing	scale 1-5, max. 5 - EN ISO 105X12 (wet/dry) (Crockmeter)	4/5
Cleaning	Wash or dry cleaning P (W)	
Flammability	UNI 9175 Class 1 IM EN 1021-1 & 2 BS 5852 CRIB 5 BS 7176 Class Medium Hazard California TB 117-2013 Will also pass other flammability standards. Flame retardant performance is dependent upon the foam used	
Environment	Certificado de OEKO-TEX® Standard 100	
Subject to changes and colour differences		



In case a white or light colour fabric has been chosen, some clothing items (especially, but not only, dark fabrics and jeans) could transfer their colour to the coated fabrics. This can also be the case in the opposite case, where upholstery can transfer its colour to light-coloured garments. This happens more with dampness and higher temperatures and is irreversible. ACTIU informs the customer that the choice of upholstery is the customer's responsibility.

ACTIU reserves the right to make technical modifications along with changes to measurements and finishes as it deems fit. It is recommended that you verify any material before making an order.

FABRIC "AY"

AY - 100% RPES

GROUP
1



907

AY21

It is strongly recommended to read the technical specifications before choosing the upholstery.



TECHNICAL SPECIFICATIONS - GROUP "AY" HIMALAYA - SIMPHONY MILLS

Composition		100% RPES
Weight g/m ²		500 g
Weight g/lfm		710 g
Width		142 cm
Usable width		138 cm
Piece length		30 m
Tariff Code (HS)		60019200
Abrasion resistance ISO 12947-2 1998	End Point Colour Change	100000 4/5
Tensile Strength ISO 13934-1	Cutting Inside	434 426
Friction Resistance EN ISO 105-X12	Dry Wet	4/5 4
Seam - Shear adhesion EN ISO 13936-2	Cutting Inside	4/5 4
Tear strength EN ISO 13937-3:2000	Cutting Inside	4/5 4
Light fastness EN ISO 105-B02	scale 1-8, max. 8	5/5+
Piling ISO 12945-2:2000	500 RPM 1000 RPM 2000 RPM 5000 RPM	4 4 4 4
Washing Instructions	Machine wash gentle max. 30°C with similar colours.	
	Do not bleach (bleach / alternative)	
	Do not tumble dry	
	Do not iron	
	Can be dry cleaned. Gentle process	

Subject to possible changes and colour differences



In case a white or light colour fabric has been chosen, some clothing items (especially, but not only, dark fabrics and jeans) could transfer their colour to the coated fabrics. This can also be the case in the opposite case, where upholstery can transfer its colour to light-coloured garments. This happens more with dampness and higher temperatures and is irreversible. ACTIU informs the customer that the choice of upholstery is the customer's responsibility.

ACTIU reserves the right to make technical modifications along with changes to measurements and finishes as it deems fit. It is recommended that you verify any material before making an order.

FABRICS
GROUP
2

FABRIC "BV"/"V"



VINYL / URETHANE TOPCOAT



107-2062 **V15**



107-2113 **V11**



107-8032 **V20**



107-4044 **V21**



107-0002 **V12**



107-2107 **V13**



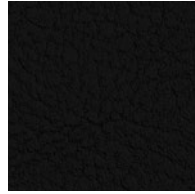
107-4042 **V18**



107-2108 **V19**



107-0001 **V17**



107-9035 **V10**

It is strongly recommended to read the technical specifications before choosing the upholstery.



TECHNICAL SPECIFICATIONS GROUP V VALENCIA - SPRADLING

Material	Vinyl / Urethane Topcoat	100%
Soporte	Hi-Loft™	Specialty knitted textile manufactured with 100% polyester yarns aimed at creating a backing with bulk, strength, and unusual softness
Finishes and treatments	PERMABLOK® ADVANCED VINYL PROTECTION	<ul style="list-style-type: none">· PERMABLOK®: Vinyl protective coating engineered to create a effective barrier for germs, abrasions and stains.· Cold Crack -23°C· Anti-stain Finish· Sulfide Stain Resistant· Mildew resistant backing and face· Anti-static Finish· UV-Resistance XENOTEST DIN 54004/ NTC 1479· EN 71-3 Safety of Toys (Migration of certain elements)
Weight	lin. metre aprox. grams	650
Width	cm	137
Abrasion resistance	rubs - EN ISO 12947:1999-2 (Martindale)	300.000
Flame Retardancy	EU: EN 1021 Part 1 & 2 ES: UNE 23.727-90 1R/M.2 FR: NF P 92-503/M2 DE: DIN 4102 B2 IT: UNI 9175 (1987) / UNI 9175/FA1 (1994) Classe 1.1M (UNO I EMME) AT: ÖNORM B 3825, Gruppe 1 - Schwerbrennbares Verhalten AT: ÖNORM A 3800 Teil 1, Qualmbildungsklasse Q1 - schwachqualmend IMO FTP 2010 Code MSC.307 (88) Part 8 3.1 & 3.2 US: FMVSS 302 US: FAR 25/853 (MED) Marine Equipment Directive (in its current valid version) ECE R118.02 (replaces Directive 95/28/CE) Annexes 6, 7 & 8 EN 71-2:2006+A1:2007 - Safety of Toys - Parte 2: Flammability Will also pass other flammability standards. Flame retardant performance is dependent upon the foam used and fireproof treatment.	

Subject to changes and colour differences



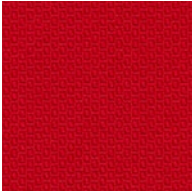
In case a white or light colour fabric has been chosen, some clothing items (especially, but not only, dark fabrics and jeans) could transfer their colour to the coated fabrics. This can also be the case in the opposite case, where upholstery can transfer its colour to light-coloured garments. This happens more with dampness and higher temperatures and is irreversible. ACTIU informs the customer that the choice of upholstery is the customer's responsibility.

ACTIU reserves the right to make technical modifications along with changes to measurements and finishes as it deems fit. It is recommended that you verify any material before making an order.

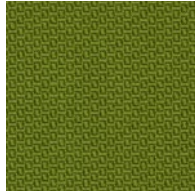
FABRIC "AD"/"D"



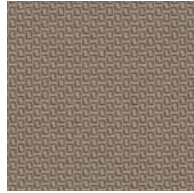
100% RECYCLED POLYESTER / FLAME RETARDANT



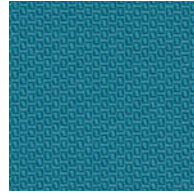
64190 D11



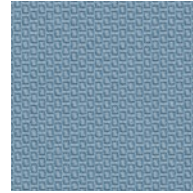
68179 D14



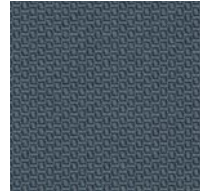
61164 D21



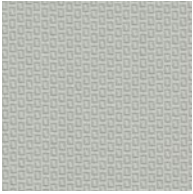
67079 D16



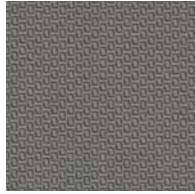
66161 D13



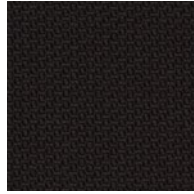
66162 D18



60105 D15



60106 D22





60999 D12

It is strongly recommended to read the technical specifications before choosing the upholstery.



**TECHNICAL SPECIFICATIONS GROUP D
FELICITY - GABRIEL**

Material	100% post-consumer recycled polyester	100%
Weight	lin. metre aprox. grams	430
Width	cm	140
Abrasion resistance	rubs - EN ISO 12947-2 (Martindale) double rubs wyzenbeek (ASTM D4157-07) (heavy duty upholstery)	90.000 100.000
Piling	scale 1-5, max. 5 - EN ISO 12945-2	5
Colour fastness to light	scale 1-8, max. 8 - EN ISO 105 - B02	5-7
Colour fastness to rubbing	scale 1-5, max. 5 - EN ISO 105X12 (wet/dry)	4-5/4-5
Cleaning	Wash or dry cleaning P (W) Felicity is made of polyester which is a material suited for environments with special requirements for cleaning.	
	 40°C shrinkage máx. 1,5%.  60°C shrinkage máx. 2,5%.	
US ACT	ASTM D4157-07 Wyz abrasion (heavy duty) 100k ASTM D3511 Pilling AATCC 16 Light fastness AATCC 8 o 116 Wet/dry crocking CA TB 117-2013	PASS PASS PASS PASS PASS
Flammability	BS EN 1021 1&2 Cigarette and Match CA TB 117-2013 Will also pass other flammability standards. Contain no flame retardant chemical. Flame retardant performance is dependent upon the foam used and fireproof treatment.	
Certificates	Abrasion resistance - BS EN ISO 12947-2/14465 Breaking force - ASTM D5034 Breaking force Colour fastness to rubbing - BS EN ISO 105-X12 Pilling - BS EN ISO 12945-2 Seam slippage - BS EN ISO 13936-2 - ASTM D4034 Yarn slippage at a sewn seam Environment - Oeko-Tex - EU Ecolabel - Bronze Cradle to Cradle	

Subject to changes and colour differences



In case a white or light colour fabric has been chosen, some clothing items (especially, but not only, dark fabrics and jeans) could transfer their colour to the coated fabrics. This can also be the case in the opposite case, where upholstery can transfer its colour to light-coloured garments. This happens more with dampness and higher temperatures and is irreversible. ACTIU informs the customer that the choice of upholstery is the customer's responsibility.

ACTIU reserves the right to make technical modifications along with changes to measurements and finishes as it deems fit. It is recommended that you verify any material before making an order.

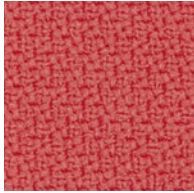
FABRIC "CM"/"M"



100% TREVIRA CS / FLAME RETARDANT



63075 **M93**



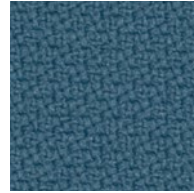
64178 **M77**



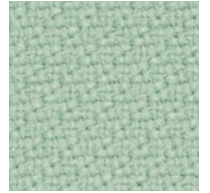
62057 **M91**



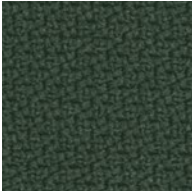
67004 **M62**



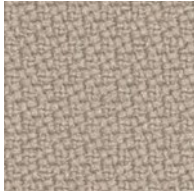
67007 **M76**



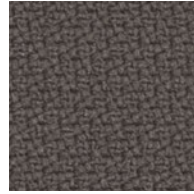
68118 **M58**



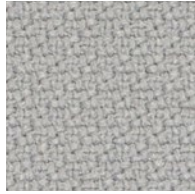
68161 **M46**



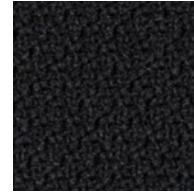
61149 **M90**



60090 **M92**



60004 **M16**



60999 **M12**

It is strongly recommended to read the technical specifications before choosing the upholstery.



TECHNICAL SPECIFICATIONS GROUP "CM"/"M" STEP - GABRIEL

Material	Trevira CS	100%
Weight	lin. metre aprox. grams	470
Width	cm	140
Abrasion resistance	rubs - EN ISO 12947-2 (Martindale)	100.000
Pilling	escala 1-5, max. 5 - EN ISO 12945-2	4-5
Colour fastness to light	escala 1-8, max. 8 - EN ISO 105 - B02	5-7
Colour fastness to rubbing	escala 1-5, max. 5 - EN ISO 105X12 (wet/dry)	4-5
Cleaning	Shrinkage: max 3,0%	
	Shrinkage: max 5,0%	
US ACT	AATCC 16 Light fastness	Pass
	ASTM D3511 Pilling	Pass
	ASTM D4157-07 Wyz abrasion (heavy duty)	Pass
	CA TB 117-2013	Pass
	AATCC 8 or 116 Wet/dry crocking	Pass
Flammability	IMO MSC 307(88) Annex 1 part 8 MED Certificate IMO DIN 4102 - B1 NFP 92-503/504/505 M1 BS EN 1021 1&2 Cigarette and Match BS EN 1021-1 Cigarette BS 5852 Part 1 0,1 Cigarette & match BS 5852 Crib 5 ÖNORM A3800-B1-B3825-Q1 UK FAR/JAR 25.853 (a) (i) (ii) BS 7176 Medium hazard AM 18 - NF D 60-013-(only for fabric) CA TB 117-2013 Class Uno UNI 9175 Class 1 I EMME DIN EN 13501-1 B-s1,d0 Will also pass other flammability standards. Flame retardant performance is dependent upon the foam used.	

Subject to changes and colour differences



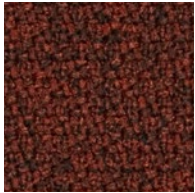
In case a white or light colour fabric has been chosen, some clothing items (especially, but not only, dark fabrics and jeans) could transfer their colour to the coated fabrics. This can also be the case in the opposite case, where upholstery can transfer its colour to light-coloured garments. This happens more with dampness and higher temperatures and is irreversible. ACTIU informs the customer that the choice of upholstery is the customer's responsibility.

ACTIU reserves the right to make technical modifications along with changes to measurements and finishes as it deems fit. It is recommended that you verify any material before making an order.

FABRIC "CM"/"M"



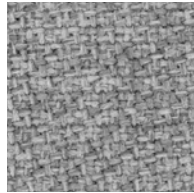
100% TREVIRA CS / FLAME RETARDANT



63075 **M89**



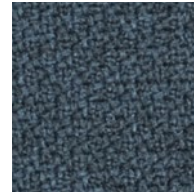
61103 **M20**



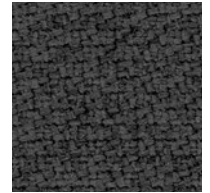
60004 **M14**



67004 **M63**



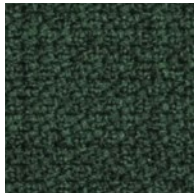
67072 **M17**



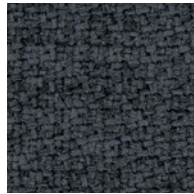
60021 **M22**



68119 **M10**



68161 **M49**



66019 **M19**

It is strongly recommended to read the technical specifications before choosing the upholstery.



**TECHNICAL SPECIFICATIONS GROUP "CM"/"M"
STEP MELANGE - GABRIEL**

Material	Trevira CS	100%
Weight	lin. metre aprox. grams	470
Width	cm	140
Abrasion resistance	rubs - EN ISO 12947-2 (Martindale)	100.000
Pilling	escale 1-5, max. 5 - EN ISO 12945-2	4-5
Colour fastness to light	escale 1-8, max. 8 - EN ISO 105 - B02	5-7
Colour fastness to rubbing	escale 1-5, max. 5 - EN ISO 105X12 (wet/dry)	4-5
Cleaning	Shrinkage: max 3,0%	
	Shrinkage: max 5,0%	
US ACT	AATCC 16 Light fastness	Pass
	ASTM D3511 Pilling	Pass
	ASTM D4157-07 Wyz abrasion (heavy duty)	Pass
	CA TB 117-2013	Pass
	AATCC 8 or 116 Wet/dry crocking	Pass
Flammability	IMO MSC 307(88) Annex 1 part 8	
	MED Certificate IMO	
	DIN 4102 - B1	
	NFP 92-503/504/505 M1	
	BS EN 1021 1&2 Cigarette and Match	
	BS EN 1021-1 Cigarette	
	BS 5852 Part 1 0,1 Cigarette & match	
	BS 5852 Crib 5	
	ÖNORM A3800-B1-B3825-Q1 UK	
	FAR/JAR 25.853 (a) (i) (ii)	
	BS 7176 Medium hazard	
	AM 18 - NF D 60-013-(only for fabric)	
	CA TB 117-2013	
	Class Uno UNI 9175 Class 1 I EMME	
	DIN EN 13501-1 B-s1,d0	

Subject to changes and colour differences



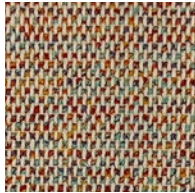
In case a white or light colour fabric has been chosen, some clothing items (especially, but not only, dark fabrics and jeans) could transfer their colour to the coated fabrics. This can also be the case in the opposite case, where upholstery can transfer its colour to light-coloured garments. This happens more with dampness and higher temperatures and is irreversible. ACTIU informs the customer that the choice of upholstery is the customer's responsibility.

ACTIU reserves the right to make technical modifications along with changes to measurements and finishes as it deems fit. It is recommended that you verify any material before making an order.

FABRIC "BC"

53% CO - 45% PES - 1% PA - 1% O.F.

GROUP
2



14 BC99



10 BC34



04 BC21



18 BC49



17 BC68












90 BC05

It is strongly recommended to read the technical specifications before choosing the upholstery.



TECHNICAL SPECIFICATIONS - GROUP "BC" CUNEO - MANUEL REVERT

Composition	CO - 53% PES - 45% PA - 1% O.F. - 1%
Width	cm ± 2% 140 cm
Weight	gr/m2 ± 5% (EN 12127) 570
Repeat	Width Plain Length Plain
Abrasion resistance	rubs - EN ISO 12947-BS 2543 (Martindale) 60.000
Piling	scale 1-5, max. 5 - EN ISO 12945-2 4
Colour fastness to light	scale 1-8, max. 8 - EN ISO 105 - B02 (Xenotest) 5
Seam slippage	Warp < 4 mm Weft < 3.5 mm
Shrinkage to washing (30°C)	Warp ≤ 4 % Weft ≤ 3 %
Solidez al Rozamiento	scale 1-5, max. 5 - EN ISO 105X12 - dry 4 scale 1-5, max. 5 - EN ISO 105X12 - wet 4-5
Orientation	
Application	Upholstery Decoration   
Acabado	Stain repelent treatment 
Recommendations	Do not expose to direct sunlight Use a soft cloth dampened in soapy water for its cleaning. Do not use solvents, bleach or harsh detergents. Soap must be natural.
Care instructions	Wash max. 30°C, mild process with similar colours  Do not bleach (bleach / alternatives)  Do not tumble dry  Do not iron  Can be dry clean, mild process 

Subject to changes and colour differences



STAIN RESISTANT BALLPOINT PROOF EASY CLEAN FIRE RETARDANT AZO DYE FREE SOFT TOUCH REACH COMPLIANT
BS 5852 part 1



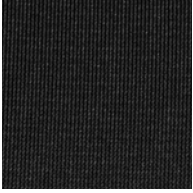
In case a white or light colour fabric has been chosen, some clothing items (especially, but not only, dark fabrics and jeans) could transfer their colour to the coated fabrics. This can also be the case in the opposite case, where upholstery can transfer its colour to light-coloured garments. This happens more with dampness and higher temperatures and is irreversible. ACTIU informs the customer that the choice of upholstery is the customer's responsibility.

ACTIU reserves the right to make technical modifications along with changes to measurements and finishes as it deems fit. It is recommended that you verify any material before making an order.

FABRIC MESH "AS"/"S"

100% POLYESTER®

GROUP
2



S30

It is strongly recommended to read the technical specifications before choosing the upholstery.



**TECHNICAL SPECIFICATIONS FABRIC MESH "AS"/"S"
STRING - GABRIEL**

Material	Polyester	100%
Weight	lin. metre aprox. grams	330
Width	cm	150
Abrasion resistance	rubs - BS EN ISO 12947-2 (Martindale)	70.000
Pilling	BS EN ISO 12945-2	4-5
Colour fastness to light	scale 1-8, max. 8 - BS EN ISO 105 - B02	5-7
Colour fastness to rubbing	scale 1-5, max. 5 - EN ISO 105X12 (wet/dry)	4-5
US ACT	AATCC 16 Light fastness	Pass
	ASTM D3511 Pilling	Pass
	ASTM D4157-07 Wyz abrasion (heavy duty)	Pass
	CA TB 117-2013	Pass
	AATCC 8 or 116 Wet/dry crocking	Pass
Cleaning	Shrinkage: max 1,0%	
	Shrinkage: max 1,5%	
Flammability	BS 5852 Part 1 0,1 Cigarette & match	
	BS EN 1021 1&2 Cigarette and Match	
	CA TB 117-2013	
	Will also pass other flammability standards. Flame retardant performance is dependent upon the foam used.	
	Contains no flame retardant chemicals.	

Subject to changes and colour differences

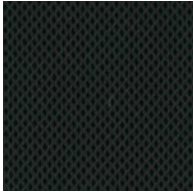
In case a white or light colour fabric has been chosen, some clothing items (especially, but not only, dark fabrics and jeans) could transfer their colour to the coated fabrics. This can also be the case in the opposite case, where upholstery can transfer its colour to light-coloured garments. This happens more with dampness and higher temperatures and is irreversible. ACTIU informs the customer that the choice of upholstery is the customer's responsibility.

ACTIU reserves the right to make technical modifications along with changes to measurements and finishes as it deems fit. It is recommended that you verify any material before making an order.

FABRIC MESH "AH"/"H"

100% POLYESTER®

GROUP
2



MS 100 H12

It is strongly recommended to read the technical specifications before choosing the upholstery.



TECHNICAL SPECIFICATIONS - FABRIC MESH "AH"/"H" MESH 100 - EXIT FABRICS

Sectors	Contract Office	
Applications	Acoustic panels, Screens, Vertical surfaces, Office furniture	
Description	3D fabric of subtle and sober appearance, for upholstery that requires high breathability or good acoustic absorption. Stock available in black with possibility of producing colours with minimum orders.	
Features	Flame retardant Indoor use Acoustic absorption	
Composition	Polyester	100%
Width	gr/m2 ± 5%	320
	gr/ml ± 5%	512
Weight	cm (+/- 2%)	160
Long	meters	25
Thickness	mm (+/- 0,3)	2,8
Abrasion resistance	EN ISO 12947-2	
	Martindale cycles	45,000
Flammability	UE: EN 1021/2	
Maintenance	Vacuum regularly. In case of stains, use a damp cloth with neutral soap suitable for cleaning of upholstery products. We would be delighted to attend to you if you have any doubt that may arise regarding this or other information.	
Colour matching	Variations can occur from one tint to another (3%)	
Subject to changes and colour differences		



In case a white or light colour fabric has been chosen, some clothing items (especially, but not only, dark fabrics and jeans) could transfer their colour to the coated fabrics. This can also be the case in the opposite case, where upholstery can transfer its colour to light-coloured garments. This happens more with dampness and higher temperatures and is irreversible. ACTIU informs the customer that the choice of upholstery is the customer's responsibility.

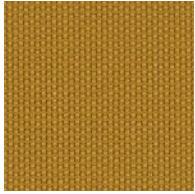
ACTIU reserves the right to make technical modifications along with changes to measurements and finishes as it deems fit. It is recommended that you verify any material before making an order.

FABRICS
GROUP
3

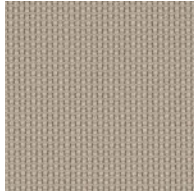
FABRIC MESH "CQ"/"Q"

100% TREVIRA CS

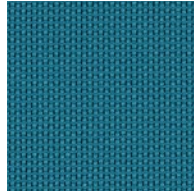
GROUP
3



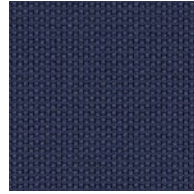
62057 Q41



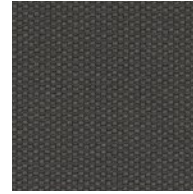
61149 Q40



67007 Q46



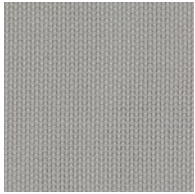
65011 Q49



60021 Q43



60999 Q42



60004 Q44

It is strongly recommended to read the technical specifications before choosing the upholstery.



TECHNICAL SPECIFICATIONS - FABRIC MESH "CQ"/"Q" SPIN - GABRIEL

Material	Trevira CS	100%
Weight	lin. metre aprox. grams	430
Width	cm	140
Abrasion resistance	rubs - EN ISO 12947-2 (Martindale) double rubs wyzenbeek (ASTM D4157-07) (heavy duty upholstery)	90.000 100.000
Piling	scale 1-5, max. 5 - EN ISO 12945-2	5
Colour fastness to light	scale 1-8, max. 8 - EN ISO 105 - B02	5-7
Colour fastness to rubbing	scale 1-5, max. 5 - EN ISO 105X12 (wet/dry)	4-5/4-5
Cleaning	Wash or dry cleaning	
	shrinkage máx. 2,5%.	
Flammability	BS EN 1021 1&2 Cigarette and Match BS 5852 0&1 BS 5852 Crib 5 CA TB 117-2013 DIN 4102 B1 NF P 92-503 M1 UNI 8456 UNI 9174 Will also pass other flammability standards. Flame retardant performance is dependent upon the foam used and fireproof treatment.	

Subject to changes and colour differences



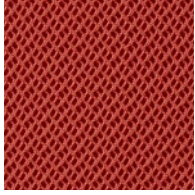
In case a white or light colour fabric has been chosen, some clothing items (especially, but not only, dark fabrics and jeans) could transfer their colour to the coated fabrics. This can also be the case in the opposite case, where upholstery can transfer its colour to light-coloured garments. This happens more with dampness and higher temperatures and is irreversible. ACTIU informs the customer that the choice of upholstery is the customer's responsibility.

ACTIU reserves the right to make technical modifications along with changes to measurements and finishes as it deems fit. It is recommended that you verify any material before making an order.

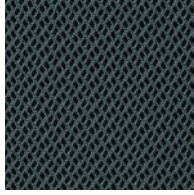
FABRIC MESH "AR"/"R"

100% POLYESTER® / POLYESTER® FLAME RETARDANT

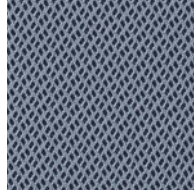
GROUP
3



63067 R37



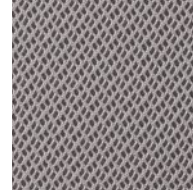
68122 R34



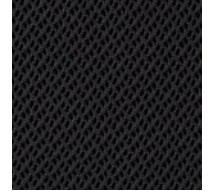
66151 R33



66138 R39



60165 R35



60999 R32

It is strongly recommended to read the technical specifications before choosing the upholstery.



TECHNICAL SPECIFICATIONS - FABRIC MESH "AR"/"R" RHYTHM - GABRIEL

Material	100% polyester/polyester flame retardant	100%
Weight	lin. metre aprox. grams	525
Width	cm	160
Abrasion resistance	rubs - EN ISO 12947-2 (Martindale) double rubs wyzenbeek (ASTM D4157-07) (heavy duty upholstery)	70.000 100.000
Piling	scale 1-5, max. 5 - EN ISO 12945-2	5
Colour fastness to light	scale 1-8, max. 8 - EN ISO 105 - B02	5-7
Colour fastness to rubbing	scale 1-5, max. 5 - EN ISO 105X12 (wet/dry)	4-5/4-5
Cleaning	Wash or dry cleaning P (W) Rhythm is made of polyester which is a material suited for environments with special requirements for cleaning.	
	 40°C shrinkage máx. 4%.	
US ACT	CA TB 117-2013 ASTM D4157-07 Wyz abrasion (heavy duty) 100k ASTM D3511 Pilling AATCC 8 o 116 Wet/dry crocking AATCC 16 Light fastness	PASS PASS PASS PASS PASS
Flammability	BS EN 1021 1&2 Cigarette and Match BS 5852 Part 1 0,1 Cigarette and Match BS 5852 Crib 5 BS7176 Medium hazard DIN 4102 B1 NF P 92-503 M1 Class Uno UNI 8456 UNI 9174 CA TB 117-2013 Will also pass other flammability standards. Contain no flame retardant chemical. Flame retardant performance is dependent upon the foam used and fireproof treatment.	
Certificates	Abrasion resistance - BS EN ISO 12947-2/14465 Breaking force - ASTM D5034 Breaking force Colour fastness to light - BS EN ISO 105 B02 Method 2 Colour fastness to perspiration - AATCC 15 Perspiration Colour fastness to rubbing - BS EN ISO 105-X12 Pilling - BS EN ISO 12945-2 Seam slippage - ASTM D4034 Yarn slippage at a sewn seam Wash stability - BS EN ISO 6330 4M 40 C PC Flat dry Environment - Oeko-Tex	

Subject to changes and colour differences



In case a white or light colour fabric has been chosen, some clothing items (especially, but not only, dark fabrics and jeans) could transfer their colour to the coated fabrics. This can also be the case in the opposite case, where upholstery can transfer its colour to light-coloured garments. This happens more with dampness and higher temperatures and is irreversible. ACTIU informs the customer that the choice of upholstery is the customer's responsibility.

ACTIU reserves the right to make technical modifications along with changes to measurements and finishes as it deems fit. It is recommended that you verify any material before making an order.

FABRIC "FA"/"A"



95% VIRGIN WOOL, 5% POLYAMIDE



LDS74 A11



LDS84 A27



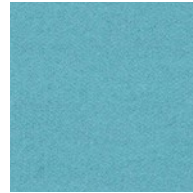
LDS45 A25



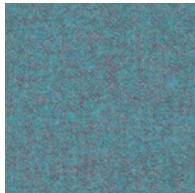
LDS33 A17



LDS19 A20



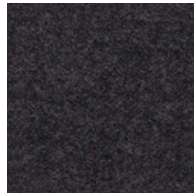
LDS55 A13



LDS56 A18



LDS59 A16



LDS34 A22

It is strongly recommended to read the technical specifications before choosing the upholstery.



TECHNICAL SPECIFICATIONS GROUP A SYNERGY - CAMIRA

Material	Virgin Wool Polyamide	95% 5%
Weight	lin. metre aprox. grams	560
Width	cm	140
Abrasion resistance	rubs - EN ISO 12947-2 (Martindale)	≥ 100,000
Colour fastness to light	scale 1-8, max. 8 - EN ISO 105 - B02	5
Colour fastness to rubbing	scale 1-5, max. 5 - EN ISO 105X12 (wet/dry)	4/4
Cleaning	Vacuum regularly. Professionally dry clean or wipe clean with a damp cloth.	
Flammability	BS EN 1021 1&2 Cigarette and Match BS 7176 Low Hazard NF D 60-013 ÖNORM B 3825 & A 3800-1 (58 kg/m ³ CMHR Foam) UNI 9175 Classe 1 IM EN 13501 Adhered Class D, s1, d0 EN 13501 Un-adhered Class E, s2, d0 Optional: Please specify when ordering: BS 5852 Ignition Source 5 when FR treated BS 7176 Medium Hazard when FR treated EN 13501 Adhered Class B, s1, d0 when FR treated EN 13501 Un-adhered Class D, s2, d0 when FR treated BS 5867-2: Type B Curtains & Drapes when FR treated Note: Flammability performance is dependent on components used. Will also pass other flammability standards.	
Certificates	Environment	- Certified to the EU Ecolabe
Subject to changes and colour differences		



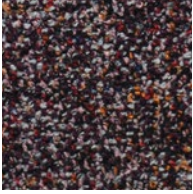
In case a white or light colour fabric has been chosen, some clothing items (especially, but not only, dark fabrics and jeans) could transfer their colour to the coated fabrics. This can also be the case in the opposite case, where upholstery can transfer its colour to light-coloured garments. This happens more with dampness and higher temperatures and is irreversible. ACTIU informs the customer that the choice of upholstery is the customer's responsibility.

ACTIU reserves the right to make technical modifications along with changes to measurements and finishes as it deems fit. It is recommended that you verify any material before making an order.

FABRIC "AM"

100% POLYESTER®

GROUP
3



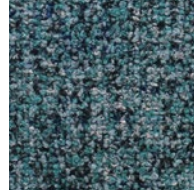
0045 AM89



0005 AM27



0037 AM20



0013 AM52



0022 AM11

It is strongly recommended to read the technical specifications before choosing the upholstery.



TECHNICAL SPECIFICATIONS GROUP AM MISS - MARIANO FARRUGIA

Composition	Polyester	100%
Width	cm	140
Weight	lin. metre aprox. grams \pm 5%	610
Longitud indicativa de la pieza	metre aprox.	25 - 30
Finishing		Water Repellent
Abrasion resistance	rubs - EN ISO 12947-2 (Martindale)	\geq 50,000
Piling	scale 1-5, max. 5 - EN ISO 12945-2 2021	4
Colour fastness to rubbing	scale 1-5, max. 5 - EN ISO 105X12	
	wet	4
	dry	3
Colour fastness to light	Xenotest ISO 105 - B02	4
Dimension Fastens to Washing	Weft	max 2
	Warp	max 2
Cleaning		

Subject to changes and colour differences

In case a white or light colour fabric has been chosen, some clothing items (especially, but not only, dark fabrics and jeans) could transfer their colour to the coated fabrics. This can also be the case in the opposite case, where upholstery can transfer its colour to light-coloured garments. This happens more with dampness and higher temperatures and is irreversible. ACTIU informs the customer that the choice of upholstery is the customer's responsibility.

ACTIU reserves the right to make technical modifications along with changes to measurements and finishes as it deems fit. It is recommended that you verify any material before making an order.

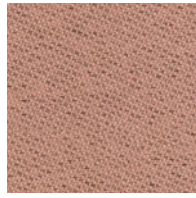
FABRIC "AC"

100% POST-CONSUMER RECYCLED POLYESTER FR (FR INSIDE THE FIBER)

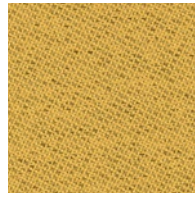
GROUP
3



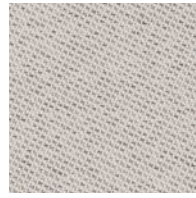
64203 **AC89**



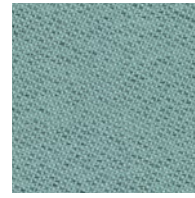
63092 **AC82**



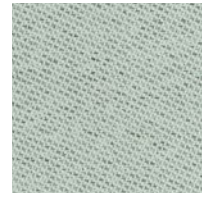
62086 **AC36**



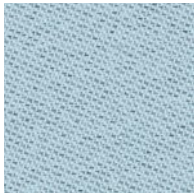
61174 **AC21**



68189 **AC54**



68191 **AC58**



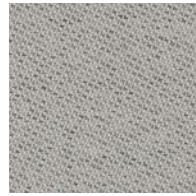
66175 **AC61**



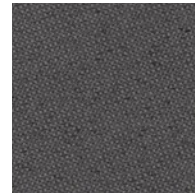
66176 **AC65**



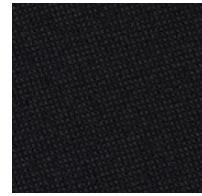
66174 **AC69**



60115 **AC16**



61171 **AC11**



60999 **AC08**

It is strongly recommended to read the technical specifications before choosing the upholstery.



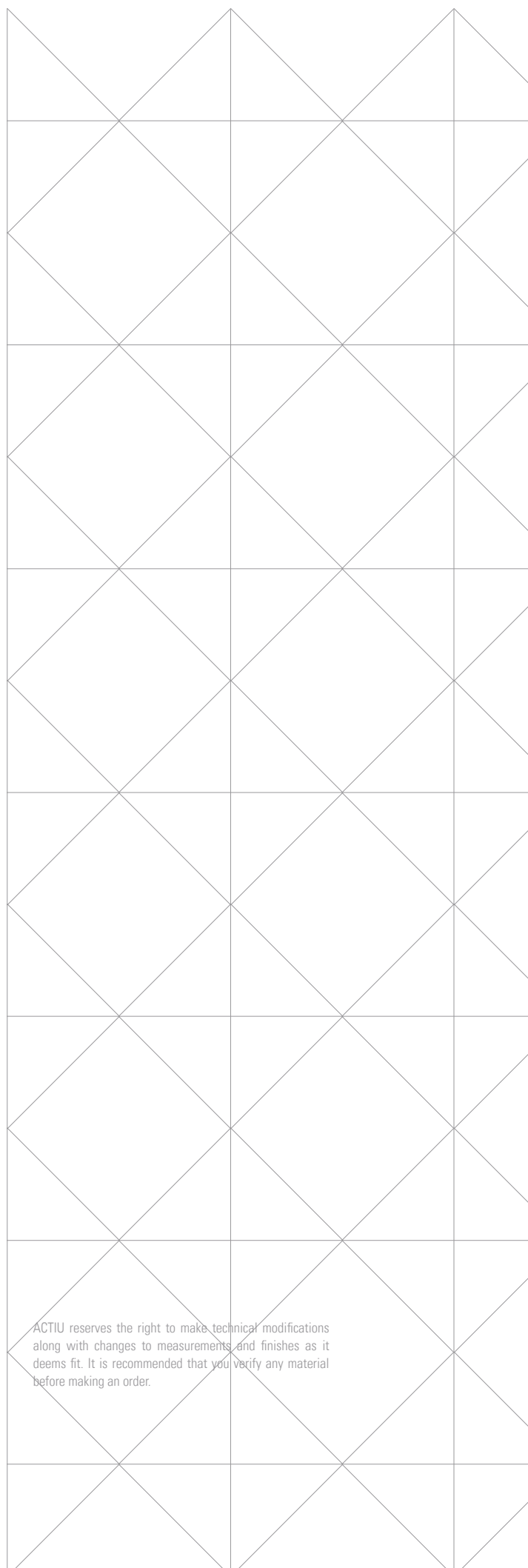
TECHNICAL SPECIFICATIONS - FABRIC "AC" CHILI - GABRIEL

Material	Post-consumer recycled polyester fr (fr inside the fiber)	100%
Weight	lin. metre aprox. grams oz/lin.yd	470 15,16
Width	cm inches	140 55
Abrasion resistance	rubs - EN ISO 12947-2 (Martindale) double rubs wyzenbeek (ASTM D4157-07) (heavy duty upholstery)	60.000 100.000
Piling	scale 1-5, max. 5 - EN ISO 12945-2	4-5
Light fastness	scale 1-8, max. 8 - EN ISO 105 - B02	5-8
Rubbing fastness	scale 1-5, max. 5 - EN ISO 105X12 (wet/dry)	4-5/4-5
Maintenance	wash or dry cleaning P(W) Chili is made of polyester which is a material suited for environments with special requirements for cleaning.	
	 60°C shrinkage máx. 3%.	
US ACT	CA TB 117-2013 ASTM D4157-07 Wyz abrasion (heavy duty) 100k ASTM D3511 Pilling AATCC 8 o 116 Wet/dry crocking AATCC 16 Light fastness	PASS PASS PASS PASS PASS
	Abrasion test results exceeding ACT Performance Guidelines are not an indicator of product lifespan	
Acoustic test air flow resistance	EN 29053 & ISO 9053-1 (airflow resistance)	
Flammability	CA TB 117-2013 NFP 92-503/504/505 M1 DIN 4102 - B1 Class Uno UNI 9175 Class 11 EMME BS EN 1021 1&2 Cigarette and Match BS EN 1021-1 Cigarette BS 7176 Medium hazard BS 5852 Crib 5 AM 18 - NF D 60-013-(only for fabric) DIN EN 13501-1 B-s1,d0 Will also pass other flammability standards. Flame retardant performance is dependent upon the foam used.	
Certificates	Abrasion resistance - BS EN ISO 12947-2/14465 - ASTM D4157-07 Wyz abrasion (heavy duty) 100k Acoustic test air flow resistance - EN 29053 & ISO 9053-1 (airflow resistance) Breaking force - ASTM D5034 Breaking force Colour fastness to light - BS EN ISO 105 B02 Method 2 - AATCC 16 Light fastness Colour fastness to perspiration - AATCC 15 Perspiration - BS EN ISO 105-E04 Colour fastness to rubbing - BS EN ISO 105-X12 Pilling - BS EN ISO 12945-2 Seam slippage - ASTM D4034 Yarn slippage at a sewn seam Wash stability - BS EN ISO 6330 4M 40 C PC Flat dry Environment - Oeko-Tex - Eurolabel	

Subject to changes and colour differences



In case a white or light colour fabric has been chosen, some clothing items (especially, but not only, dark fabrics and jeans) could transfer their colour to the coated fabrics. This can also be the case in the opposite case, where upholstery can transfer its colour to light-coloured garments. This happens more with dampness and higher temperatures and is irreversible. ACTIU informs the customer that the choice of upholstery is the customer's responsibility.



ACTIU reserves the right to make technical modifications along with changes to measurements and finishes as it deems fit. It is recommended that you verify any material before making an order.

FABRICS
GROUP
5

FABRIC "AV"

100% RECYCLED POLYESTER FR

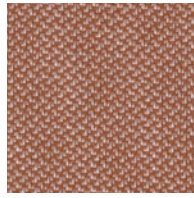
GROUP
5



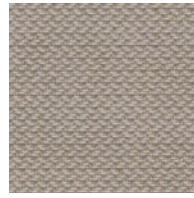
454 AV84



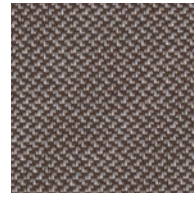
664 AV86



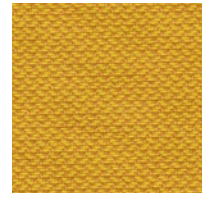
414 AV82



224 AV20



324 AV26



424 AV36



914 AV43



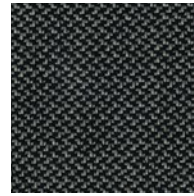
944 AV51



774 AV66



764 AV64



164 AV12



194 AV08

It is strongly recommended to read the technical specifications before choosing the upholstery.



TECHNICAL SPECIFICATIONS - FABRIC "AV" REVIVE 1 - KVADRAT

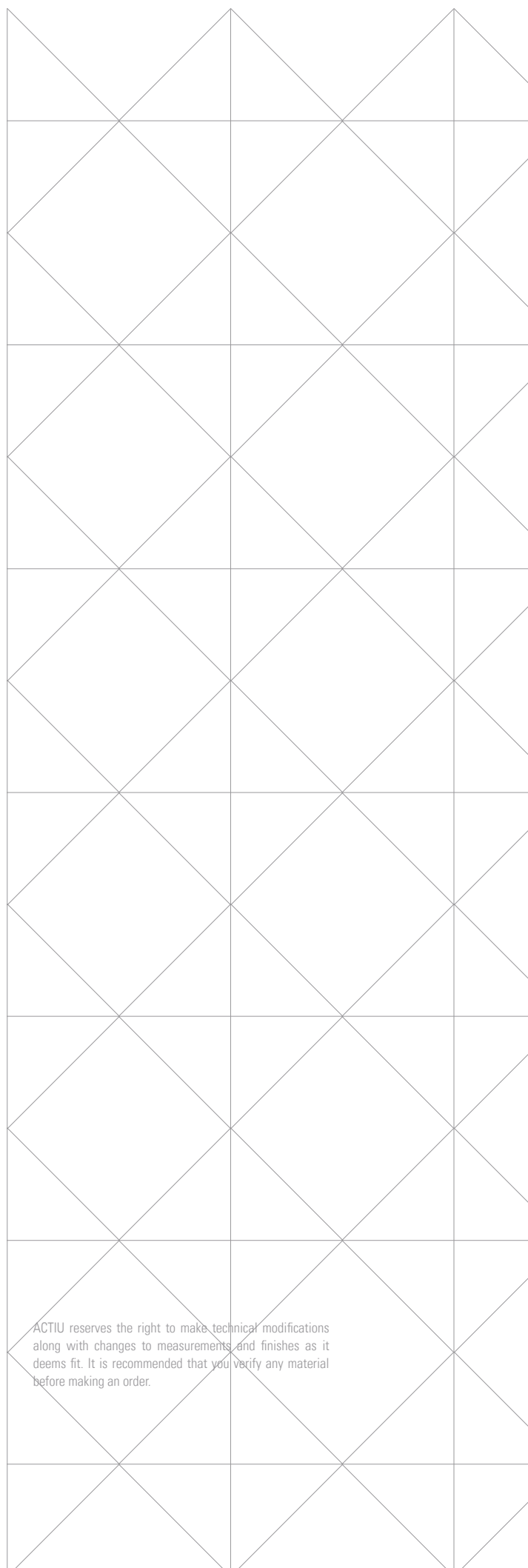
Material	recycled polyester FR	100%
Weight	lin. metre aprox. grams oz/lin.yd	420 13,60
Width	cm inches	140 55
Yarn type	Filament	
Binding	Dobby	
Abrasion resistance	rubs - EN ISO 12947-2 (Martindale) Abrasion test results exceeding ACT performance guidelines are not an indicator of product lifespan. Multiple factors affect fabric durability and appearance retention	60.000
Piling	scale 1-5, max. 5 - EN ISO 12945-2	4-5
Seam slippage	EN ISO 13 936-2 180 Newton Seam parallel to warp Seam parallel to weft	3,5 mm 4 mm
Light fastness	scale 1-8, max. 8 - EN ISO 105 - B02	5-7
Rubbing fastness	scale 1-5, max. 5 - EN ISO 105X12 (wet/dry)	4-5/5
Absorption	EN ISO 354 Class D (flat) Class B (waved)	0,55 0,80
Airflow	EN 29053	597 Pa s/m
Maintenance	<p>Vacuum clean frequently, ideally every week if fixed covers. Remove stains as soon as they occur, with clean warm water or sparkling water. Extraction clean when necessary. Extraction cleaning might dissolve water-based glue. Pay attention to temperature and amount of cleaning fluid.</p> <p>Also washable at 60-80°C, half wash load. Drip drying. Mount in moist condition. Shrinkage app. 2% at 60°C.</p> <p>Be aware of increased shrinking and creasing the higher the temperature.</p>	

Flammability	<p>AS/NZS 3837 class 1 ASTM E84 Class A Unadhered ASTM E84 Class B Adhered BS 5852 crib 5 with treatment * BS 5852 ignition source 3 BS 5852 part 1 with treatment * DIN 4102 B1 EN 1021-1/2 GB 50222 B1 with treatment (Chinese) * IMO FTP Code 2010 Part 8 NF D 60 013 with treatment * NFPA 701 ÖNORM B1/Q1 SN 198 898 5.3 with treatment * UNI 9175 11M UNI 9177 Classe 1 US Cal. Bull. 117-2013 * To pass this test flame retardant treatment is necessary.</p>	
--------------	--	--

Certificates	<p>Greenguard Gold: Low chemical emission Environmental Product Declaration (EPD): Based on a LCA following EN 15804 and follow the standard of ISO 14040 Health Product Declaration (HPD): Declaring textile content and substance</p>	
--------------	---	--

Subject to changes and colour differences

In case a white or light colour fabric has been chosen, some clothing items (especially, but not only, dark fabrics and jeans) could transfer their colour to the coated fabrics. This can also be the case in the opposite case, where upholstery can transfer its colour to light-coloured garments. This happens more with dampness and higher temperatures and is irreversible. ACTIU informs the customer that the choice of upholstery is the customer's responsibility.



ACTIU reserves the right to make technical modifications along with changes to measurements and finishes as it deems fit. It is recommended that you verify any material before making an order.

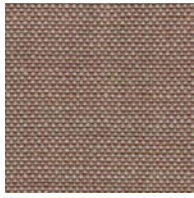
FABRIC "FR"

90% NEW WOOL, 10% NYLON

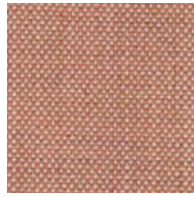
GROUP
5



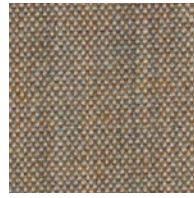
346 FR93



326 FR84



612 FR82



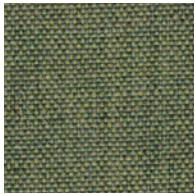
242 FR20



223 FR21



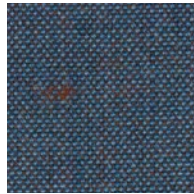
233 FR26



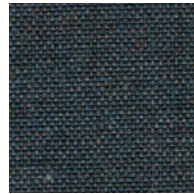
933 FR47



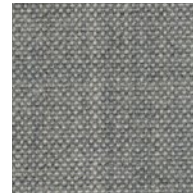
733 FR65



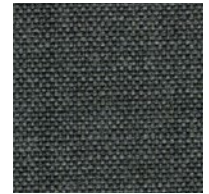
743 FR69



753 FR66



123 FR14



163 FR11

It is strongly recommended to read the technical specifications before choosing the upholstery.



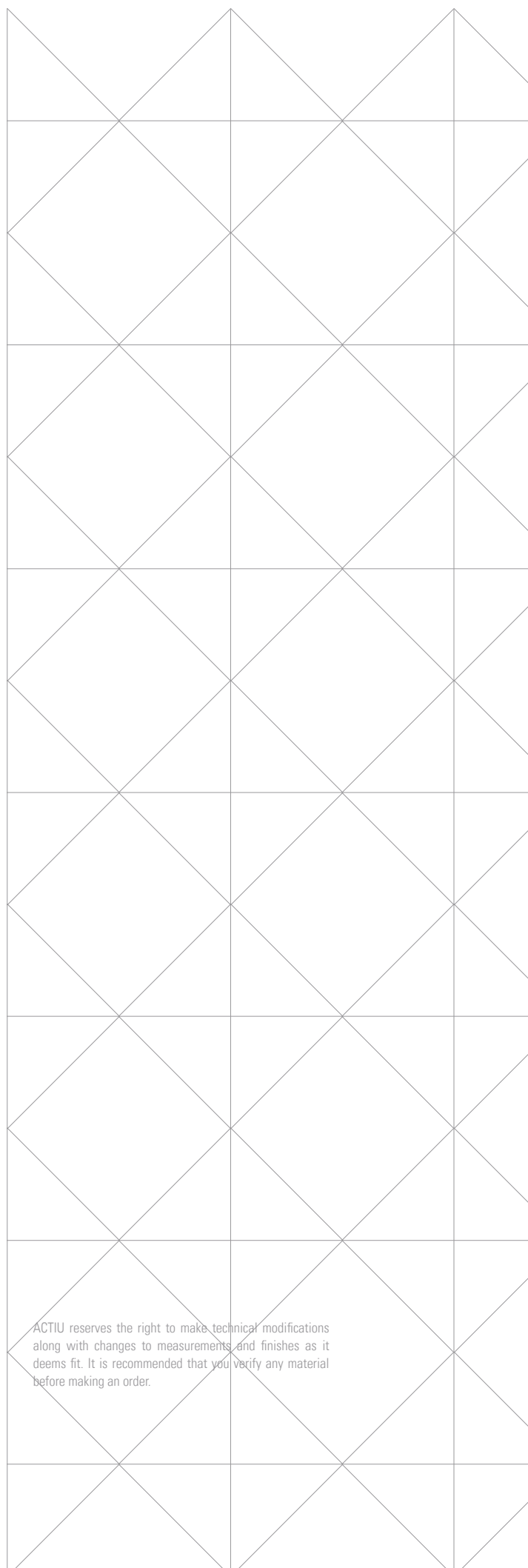
TECHNICAL SPECIFICATIONS - FABRIC "FR" REMIX 3 - KVADRAT

Material	new wool nylon	90% 10%
Weight	lin. metre aprox. grams oz/lin.yd	420 13,60
Width	cm inches	140 55
Yarn type	Worsted	
Binding	Plain	
Abrasion resistance	rubs - EN ISO 12947-2 (Martindale) Abrasion test results exceeding ACT performance guidelines are not an indicator of product lifespan. Multiple factors affect fabric durability and appearance retention	100,000
Piling	scale 1-5, max. 5 - EN ISO 12945-2	4
Seam slippage	EN ISO 13 936-2 180 Newton Seam parallel to warp Seam parallel to weft	5 mm 3 mm
Light fastness	scale 1-8, max. 8 - EN ISO 105 - B02	5-7
Rubbing fastness	scale 1-5, max. 5 - EN ISO 105X12 (wet/dry)	3-5/4-5
Absorption	EN ISO 354 Class D (flat) Class B (waved)	0,55 0,80
Airflow	EN 29053	465 Pa s/m
Maintenance	Vacuum clean frequently, ideally every week. Remove stains as soon as they occur, with clean warm water or sparkling water. Extraction clean when necessary. Extraction cleaning might dissolve water-based glue. Pay attention to temperature and amount of cleaning fluid.	



Flammability	AS/NZS 1530.3 AS/NZS 3837 class 2 ASTM E84 Class A Unadhered ASTM E84 Class A Adhered BS 5852 crib 5 with treatment * BS 5852 part 1 EN 1021-1/2 EN 13501 B-s2, d0 wrapped, with treatment * GB 50222 B1 with treatment (Chinese) * IMO FTP Code 2010 Part 7 with treatment * IMO FTP Code 2010 Part 8 NF D 60 013 NFPA 260 ONORM B1/Q1 SN 198 898 5.3 with treatment * UNI 9175 11M US Cal. Bull. 117-2013 Free from added flame retardant chemicals as standard * To pass this test flame retardant treatment is necessary.
Certificates	Greenguard Gold: Low chemical emission Environmental Product Declaration (EPD): Based on a LCA following EN 15804 and follow the standard of ISO 14040 Health Product Declaration (HPD): Declaring textile content and substance
Subject to changes and colour differences	

In case a white or light colour fabric has been chosen, some clothing items (especially, but not only, dark fabrics and jeans) could transfer their colour to the coated fabrics. This can also be the case in the opposite case, where upholstery can transfer its colour to light-coloured garments. This happens more with dampness and higher temperatures and is irreversible. ACTIU informs the customer that the choice of upholstery is the customer's responsibility.



ACTIU reserves the right to make technical modifications along with changes to measurements and finishes as it deems fit. It is recommended that you verify any material before making an order.

FABRIC "AP"

100% PES FR

GROUP
5



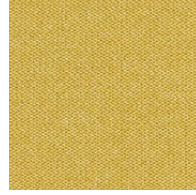
65 AP85



24 AP92



20 AP94



16 AP36



11 AP23



10 AP24



32 AP44



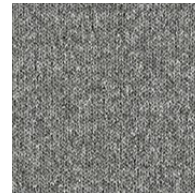
38 AP49



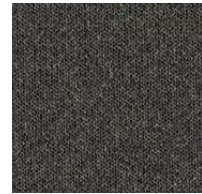
45 AP66



42 AP65



51 AP14



53 AP11

It is strongly recommended to read the technical specifications before choosing the upholstery.



TECHNICAL SPECIFICATIONS - FABRIC "AP" MOSS - CREVIN

Material	PES FR	100%
Weight	gr/m2 gr/lm	488 ± 5% 707 ± 5%
Width	cm	140 + 4
Abrasion resistance	rubs - EN ISO 12947-2 (Martindale)	50.000
Abrasion resistance (change of aspect: 3000 cycles)	EN ISO 12947/4:1998 and EN 14465:2003 (Annex A)	3-4
Piling	scale 1-5, max. 5 - EN ISO 12945-2	4-5
Seam slippage	EN ISO 13 936-2:2004 Warp Weft	1,70 mm 2,50 mm
Light fastness	scale 1-8, max. 8 - EN ISO 105-B02:1998 and EN ISO 105 B02/A01:2002	6-7
Rubbing fastness	scale 1-5, max. 5 - EN ISO 105-X12:2002 (wet/dry)	4-5/5
Washing Conditions		
Soiling and cleanability	FORD FLTM BN 112-08:2005	4-5*
Dimensional change domestic washing and drying (%)	EN ISO 3759:2008, EN ISO 6330:2000 and EN ISO 5077:2008 Warp Weft	-3 +1,5
Ignitability	BS5852 Source 0 BS5852 Source 1* EN1021-Part 1 EN1021-Part 2 CAL TB 117 NFPA 260 BS 7176 Low Hazard UNI 9175 Classe IIM IMO Annex 1 Part 8 NF D 60 013 NF P92-507-M1 DIN 4102 B2 *FR Foam	
Acoustic certificate	EN ISO 354	
Certificates		
Subject to changes and colour differences		

In case a white or light colour fabric has been chosen, some clothing items (especially, but not only, dark fabrics and jeans) could transfer their colour to the coated fabrics. This can also be the case in the opposite case, where upholstery can transfer its colour to light-coloured garments. This happens more with dampness and higher temperatures and is irreversible. ACTIU informs the customer that the choice of upholstery is the customer's responsibility.

ACTIU reserves the right to make technical modifications along with changes to measurements and finishes as it deems fit. It is recommended that you verify any material before making an order.

FABRIC "BE"

74%PES 12%PES REC 7%CO REC 7%MA

GROUP
5



21 BE90



71 BE91



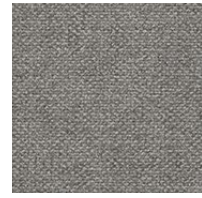
20 BE34



07 BE23



10 BE25



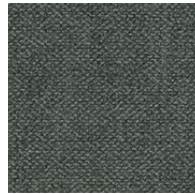
54 BE14



38 BE49



32 BE46



33 BE53



49 BE65



43 BE66



52 BE11

It is strongly recommended to read the technical specifications before choosing the upholstery.



TECHNICAL SPECIFICATIONS - FABRIC "BE" VELVETY FR - CREVIN

Material	PES PES REC CO REC MA	74% 12% 7% 7%
Weight	gr/m2 gr/m	571 ± 5% 800 ± 5%
Width	cm	140 + 4
Abrasion resistance	rubs - EN ISO 12947-2 (Martindale)	200.000
Abrasion resistance (change of aspect: 3000 cycles)	EN ISO 12947/4:1998 and EN 14465:2003 (Annex A)	4-5
Piling	scale 1-5, max. 5 - EN ISO 12945-2	5
Seam slippage	EN ISO 13 936-2:2004 Warp Weft	 1,00 mm 1,00 mm
Light fastness	scale 1-8, max. 8 - EN ISO 105-B02:1998 and EN ISO 105 B02/A01:2002	5-6
Rubbing fastness	scale 1-5, max. 5 - EN ISO 105-X12:2002 (wet/dry)	4-5/5
Snagging resistance*	ASTM D 3939:13(2017) * In a snagging test, a fabric sample is placed on a cylindrical drum and a spiked ball bounces randomly against the rotating fabric. After 600 cycles the degree of damage is graded on a scale of 1 to 5. A 4-5 grading stands for very high snag resistance. In practice, this means that no snags or threading are likely to occur, although prolonged and intense animal impact may provoke superficial pilling, which can be easily removed by simple brushing. Caution: Scratching is natural feline behaviour. A 4-5 grading does not mean a fabric is immune to the impact of animal claws. To protect upholstered furniture from prolonged and severe scratching, especially from cats, alternative scratching posts or protective pads are recommended. Destructive scratching due to extreme feline behaviour is no ground for claims.	4-5
Washing Conditions		
Soiling and cleanability	FORD FLTM BN 112-08:2005	4-5
Dimensional change domestic washing and drying (%)	EN ISO 3759:2008, EN ISO 6330:2000 and EN ISO 5077:2008 Warp Weft	 -1,6 -2
Ignitability	B55852 Source 0 EN1021-Part 1:2006 CAL TB 117:2013 NFPA 260:2013 B55852 Source 1 EN1021-Part 2:2006 BS 7176 Low Hazard UNI 9175 Classe 3IM IMO Anexo1 Parte 8	
Certificates		
Subject to changes and colour differences		

ACTIU reserves the right to make technical modifications along with changes to measurements and finishes as it deems fit. It is recommended that you verify any material before making an order.

In case a white or light colour fabric has been chosen, some clothing items (especially, but not only, dark fabrics and jeans) could transfer their colour to the coated fabrics. This can also be the case in the opposite case, where upholstery can transfer its colour to light-coloured garments. This happens more with dampness and higher temperatures and is irreversible. ACTIU informs the customer that the choice of upholstery is the customer's responsibility.

FABRIC "GP"/"P"

100% FIRST QUALITY SELECTED LEATHER (COW GRAIN LEATHER)

GROUP
5



P18



P11



P10

It is strongly recommended to read the technical specifications before choosing the upholstery.



**TECHNICAL SPECIFICATIONS FABRIC "GP"/"P"
SAVANA - MARIANO FARRUGIA**

Material	First quality selected leather (Cow grain leather)	100%
Finish	First quality leather semi-aniline (Chrome tanning)	100%
Thickness	mm	0,8-1,1
Tear resistance	DIN 53329	> 20 N
Bending resistance	DIN 53351	Min. 100.000
Grip Finish	IUF 470	min. 1,5N/10mm
pH of the aqueous excerpt	DIN 53312	> 3,5 N
Colour fastness to light	DIN 50004	5
Colour fastness to rubbing	DIN 53339 (wet/dry)	250 °C (Wet) / 1000 °C (Dry)
Cleaning	Wipe clean with neutral detergent.	
Flammability	BS 5852:90	

Subject to changes and colour differences

In case a white or light colour fabric has been chosen, some clothing items (especially, but not only, dark fabrics and jeans) could transfer their colour to the coated fabrics. This can also be the case in the opposite case, where upholstery can transfer its colour to light-coloured garments. This happens more with dampness and higher temperatures and is irreversible. ACTIU informs the customer that the choice of upholstery is the customer's responsibility.

ACTIU reserves the right to make technical modifications along with changes to measurements and finishes as it deems fit. It is recommended that you verify any material before making an order.

FABRICS
GROUP
6

FABRIC "FC"

FC - 60% WO - 40% CO

GROUP
6



20

FC21








70

FC19

It is strongly recommended to read the technical specifications before choosing the upholstery.



TECHNICAL SPECIFICATIONS - GROUP "FC"
SCAPIGLIATA 2307 - FILIPPO UECHER

Composition	WOOL - 60% COTTON - 40%
Width	cm ± 2% 135 cm
Weight	gr/m2 ± 5% (EN 12127) 850
Abrasion resistance	rubs - EN ISO 12947-BS 2543 (Martindale) 25.000
Orientation	
Application	Upholstery Decoration
Recommendations	Cleaning instructions: Professional dry cleaning is always recommended.
Care instructions	Do not wash machine  Do not bleach (bleach / alternatives)  Low temperature iron  Can be dry clean, mild process 
Subject to changes and colour differences	

In case a white or light colour fabric has been chosen, some clothing items (especially, but not only, dark fabrics and jeans) could transfer their colour to the coated fabrics. This can also be the case in the opposite case, where upholstery can transfer its colour to light-coloured garments. This happens more with dampness and higher temperatures and is irreversible. ACTIU informs the customer that the choice of upholstery is the customer's responsibility.

ACTIU reserves the right to make technical modifications along with changes to measurements and finishes as it deems fit. It is recommended that you verify any material before making an order.

FABRICS
GROUP
7

FABRIC "FH"

70% NEW WOOL, 30% VISCOSE

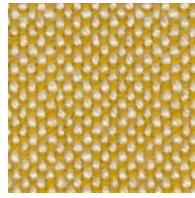
GROUP
7



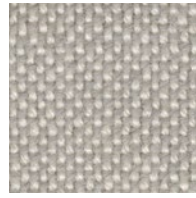
687 FH89



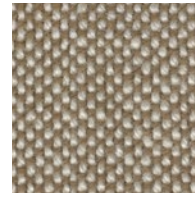
457 FH34



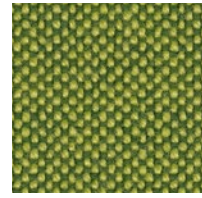
407 FH37



103 FH20



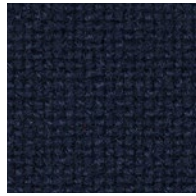
220 FH22



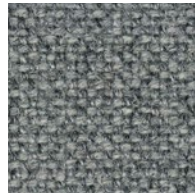
980 FH43



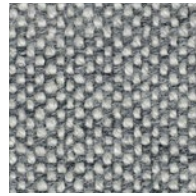
723 FH65



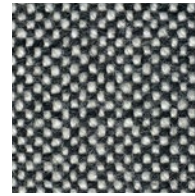
764 FH66



130 FH14



116 FH16



126 FH06



180 FH08

It is strongly recommended to read the technical specifications before choosing the upholstery.



**TECHNICAL SPECIFICATIONS - FABRIC "FH"
HALLINGDALL 65 - KVADRAT**

Material	new wool viscose	70% 30%
Weight	lin. metre aprox. grams oz/lin.yd	795 25,60
Width	cm inches	130 51
Yarn type	Woolen	
Binding	Plain	
Abrasion resistance	rubs - EN ISO 12947-2 (Martindale) Abrasion test results exceeding ACT performance guidelines are not an indicator of product lifespan. Multiple factors affect fabric durability and appearance retention	100,000
Piling	scale 1-5, max. 5 - EN ISO 12945-2	3-4
Seam slippage	EN ISO 13 936-2 180 Newton Seam parallel to warp Seam parallel to weft	4,5 mm 4,0 mm
Snagging	ICI Testmethod FAB 29, Tumble-Box	Grade 1
Light fastness	scale 1-8, max. 8 - EN ISO 105 - B02	5-7
Rubbing fastness	scale 1-5, max. 5 - EN ISO 105X12 (wet/dry)	3-5/4-5
Absorption	EN ISO 354 Class D (flat) Class B (waved)	0,54 0,70
Airflow	EN 29053	182 Pa s/m
Maintenance	Vacuum clean frequently, ideally every week. Remove stains as soon as they occur, with clean warm water or sparkling water. Extraction clean when necessary. Extraction cleaning might dissolve water-based glue. Pay attention to temperature and amount of cleaning fluid.	

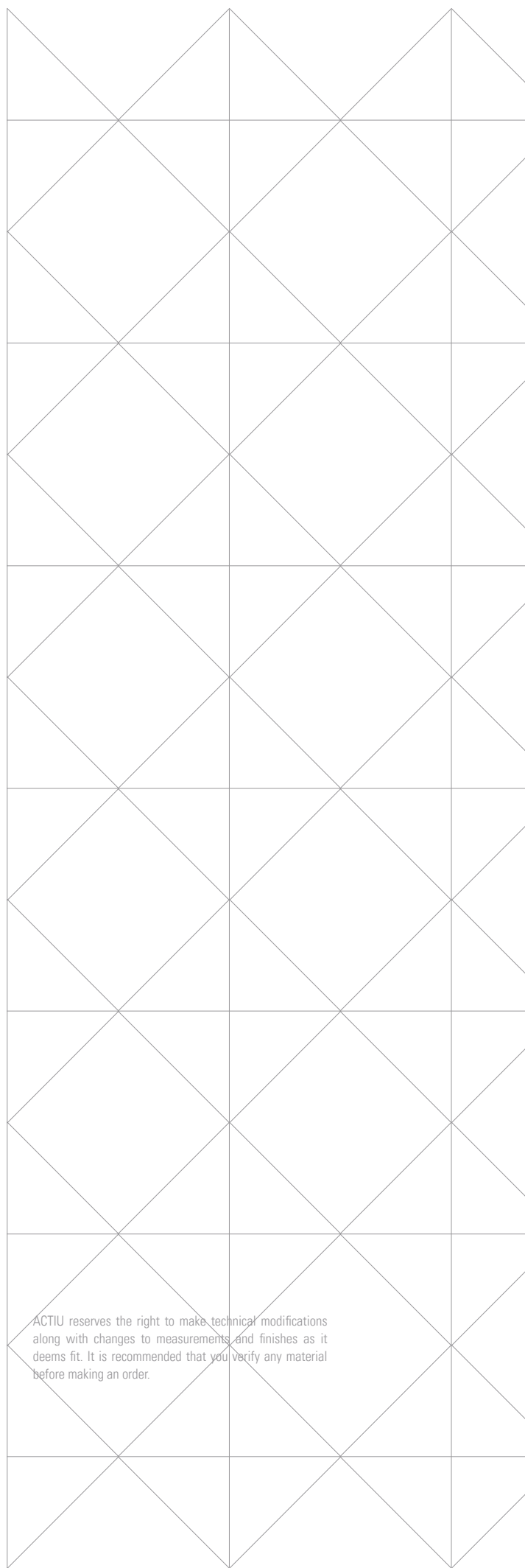


Flammability	AS/NZS 1530.3 AS/NZS 3837 class 2 ASTM E84 Class A Adhered ASTM E84 Class B Unadhered BS 5852 Crib 5 BS 5852 part 1 EN 1021-1/2 IMO FTP Code 2010 Part 8 NF D 60 013 NFPA 260 ÖNORM B1/Q1 SN 198 898 5.3 with treatment * UNI 9175 11M US Cal. Bull. 117-2013 Free from added flame retardant chemicals as standard * To pass this test flame retardant treatment is necessary.
--------------	--

Certificates	Greenguard Gold: Low chemical emission Environmental Product Declaration (EPD): Based on a LCA following EN 15804 and follow the standard of ISO 14040 Health Product Declaration (HPD): Declaring textile content and substance
--------------	--

Subject to changes and colour differences

In case a white or light colour fabric has been chosen, some clothing items (especially, but not only, dark fabrics and jeans) could transfer their colour to the coated fabrics. This can also be the case in the opposite case, where upholstery can transfer its colour to light-coloured garments. This happens more with dampness and higher temperatures and is irreversible. ACTIU informs the customer that the choice of upholstery is the customer's responsibility.



ACTIU reserves the right to make technical modifications along with changes to measurements and finishes as it deems fit. It is recommended that you verify any material before making an order.

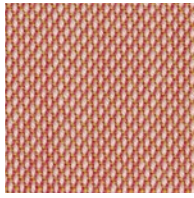
FABRIC "FS"

90% NEW WOOL, 10% NYLON

GROUP
7



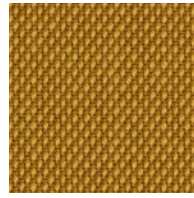
636 FS83



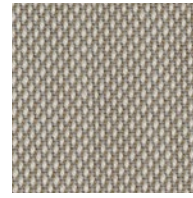
515 FS11



436 FS90



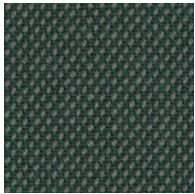
453 FS15



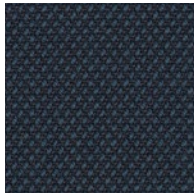
213 FS23



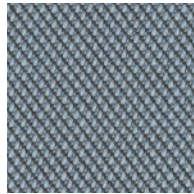
983 FS16



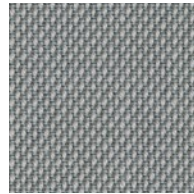
966 FS10



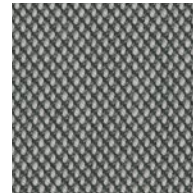
796 FS67



713 FS18



113 FS17



133 FS12



124 FS14

It is strongly recommended to read the technical specifications before choosing the upholstery.



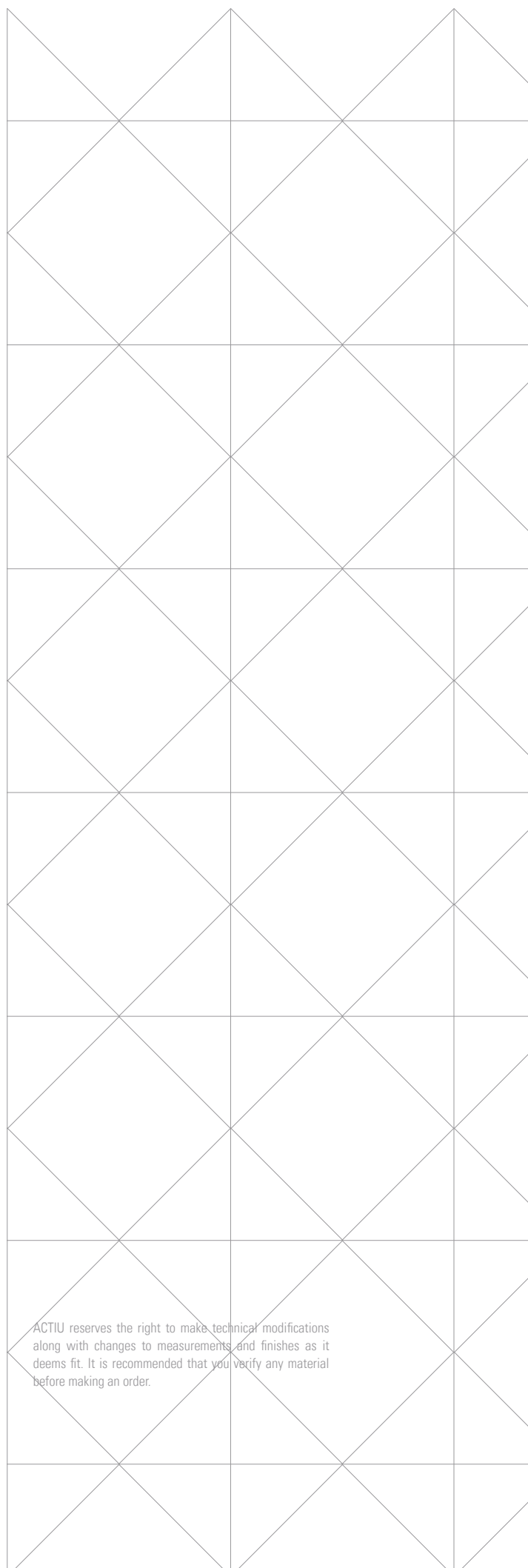
TECHNICAL SPECIFICATIONS - FABRIC "FS" STEELCUT TRIO 3 - KVADRAT

Material	new wool nylon	90% 10%
Weight	lin. metre aprox. grams oz/lin.yd	770 24,80
Width	cm inches	140 55
Yarn type	Worsted	
Binding	Semi-plain	
Abrasion resistance	rubs - EN ISO 12947-2 (Martindale) Abrasion test results exceeding ACT performance guidelines are not an indicator of product lifespan. Multiple factors affect fabric durability and appearance retention	100,000
Piling	scale 1-5, max. 5 - EN ISO 12945-2	4
Seam slippage	EN ISO 13 936-2 180 Newton Seam parallel to warp Seam parallel to weft	3,5 mm 2,0 mm
Light fastness	scale 1-8, max. 8 - EN ISO 105 - B02	5-7
Rubbing fastness	scale 1-5, max. 5 - EN ISO 105X12 (wet/dry)	3-5/4-5
Absorption	EN ISO 354 Class D (flat) Class B (waved)	0,70 0,95
Airflow	EN 29053	910 Pa s/m
Maintenance	Vacuum clean frequently, ideally every week. Remove stains as soon as they occur, with clean warm water or sparkling water. Extraction clean when necessary. Extraction cleaning might dissolve water-based glue. Pay attention to temperature and amount of cleaning fluid.	



Flammability	AS/NZS 1530.3 AS/NZS 3837 class 2 ASTM E84 Class B Unadhered ASTM E84 Class B Adhered BS 5852 crib 5 with treatment * BS 5852 part 1 EN 1021-1/2 GB 50222 B1 with treatment (Chinese) * IMO FTP Code 2010 Part 8 NF D 60 013 NFPA 260 ÖNORM B1/Q1 SN 198 898 5.3 with treatment * UNI 9175 11M US Cal. Bull. 117-2013 Free from added flame retardant chemicals as standard * To pass this test flame retardant treatment is necessary.
Certificates	Greenguard Gold: Low chemical emission Environmental Product Declaration (EPD): Based on a LCA following EN 15804 and follow the standard of ISO 14040 Health Product Declaration (HPD): Declaring textile content and substance
Subject to changes and colour differences	

In case a white or light colour fabric has been chosen, some clothing items (especially, but not only, dark fabrics and jeans) could transfer their colour to the coated fabrics. This can also be the case in the opposite case, where upholstery can transfer its colour to light-coloured garments. This happens more with dampness and higher temperatures and is irreversible. ACTIU informs the customer that the choice of upholstery is the customer's responsibility.



ACTIU reserves the right to make technical modifications along with changes to measurements and finishes as it deems fit. It is recommended that you verify any material before making an order.

OTHER FINISHES

LEATHER FACE

100% RECYCLED LEATHER FIBRES



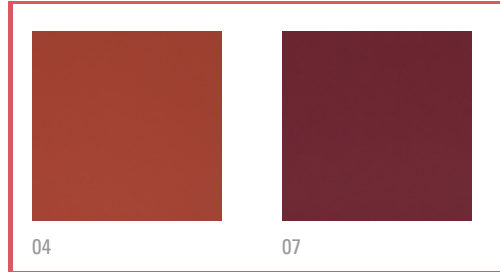
02



11



10



04

07



MENTIONED FINISHES WILL BE REMOVE FROM OUR PRICE LIST ONCE THEY BE OUT OF STOCK.



TECHNICAL SPECIFICATIONS LEATHER FIBRES

Material	Recycled Leather Fibres	100%
Finish	Poliurethane Water Solution	100%
Weight lin/metre	grams	140
Width	cm	140-145
Thickness	mm	1,1 - 1,8
Abrasion resistance	rubs - EN ISO 12947-2 (Martindale)	45.000
Colour fastness to rubbing	ISO 105X12 (wet/dry)	> 500 cycles (Wet) > 2.000 cycles (Dry)
Tear resistance	ISO-33771	>10n
Finish Adhesion	ISO-11644	>5n
Cleaning	Wipe clean with neutral deterge.	
Flammability	BS EN 1021 - 1:2006 (Cigarette) - BS EN 1021 - 2:2006 (match)	

Subject to changes and colour differences

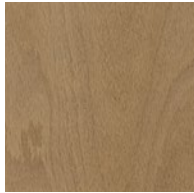
In case a white or light colour fabric has been chosen, some clothing items (especially, but not only, dark fabrics and jeans) could transfer their colour to the coated fabrics. This can also be the case in the opposite case, where upholstery can transfer its colour to light-coloured garments. This happens more with dampness and higher temperatures and is irreversible. ACTIU informs the customer that the choice of upholstery is the customer's responsibility.

ACTIU reserves the right to make technical modifications along with changes to measurements and finishes as it deems fit. It is recommended that you verify any material before making an order.

BEECH LACQUERED PLYWOOD



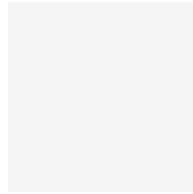
18/28 NATURAL
LAQUERED BEECH



14 CHESTNUT



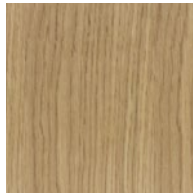
19 WENGUE LAQUE-
RED OAK



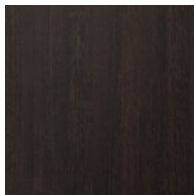
00 WHITE



07 RED



26 NATURAL OAK

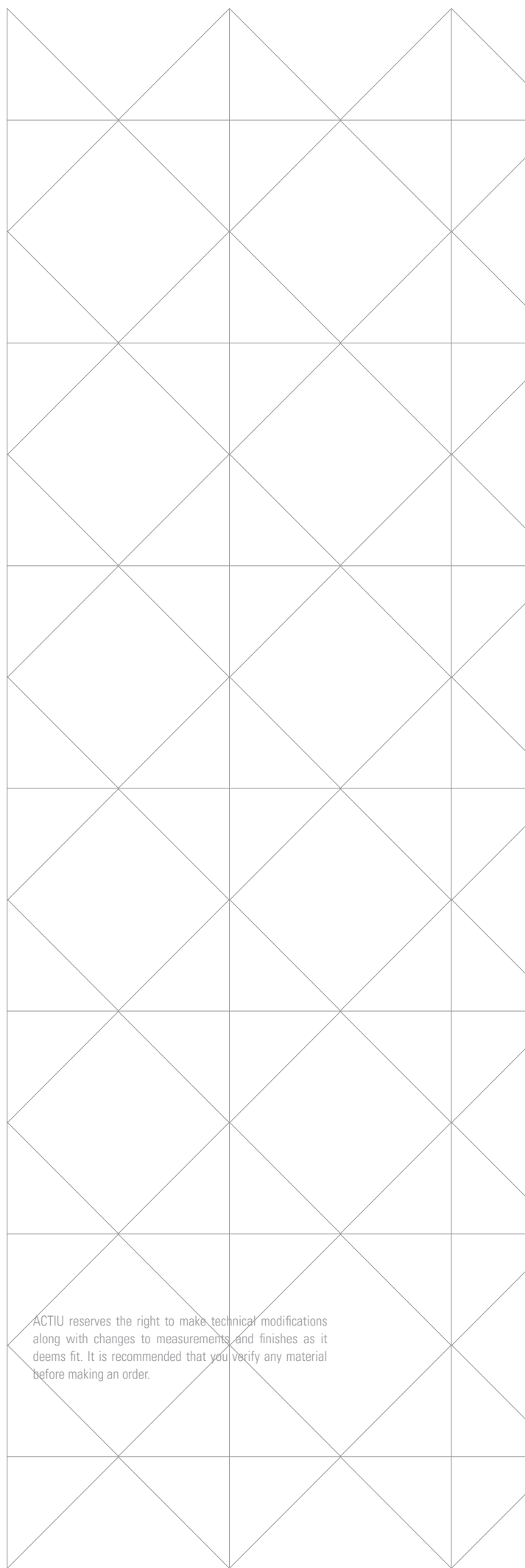


29 WENGUE LAQUERED OAK



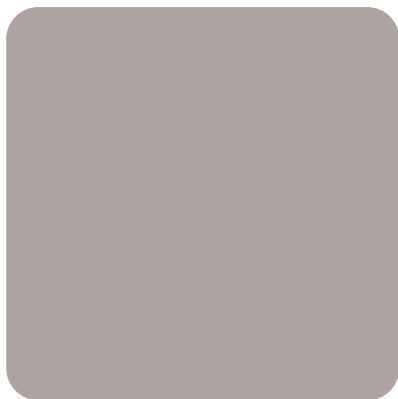
LACQUERED PLYWOOD TECHNICAL SPECIFICATIONS

Plywood desktop of 10 mm thickness manufactured with natural beech or oak wood and synthetic resins using high pressure and heat. The alternating arrangement of the fibres formed at right angles (perpendicular and transverse), gives the product great dimensional stability and durability, great resistance and lightness, 100% recyclable.



ACTIU reserves the right to make technical modifications along with changes to measurements and finishes as it deems fit. It is recommended that you verify any material before making an order.

POLIURETHANE



01 GREY



08 BLACK



06 BLUE



15 PISTACHIO



07 RED



TECHNICAL SPECIFICATIONS POLIURETHANE

PU (Poliurethane integral) - (TPU)

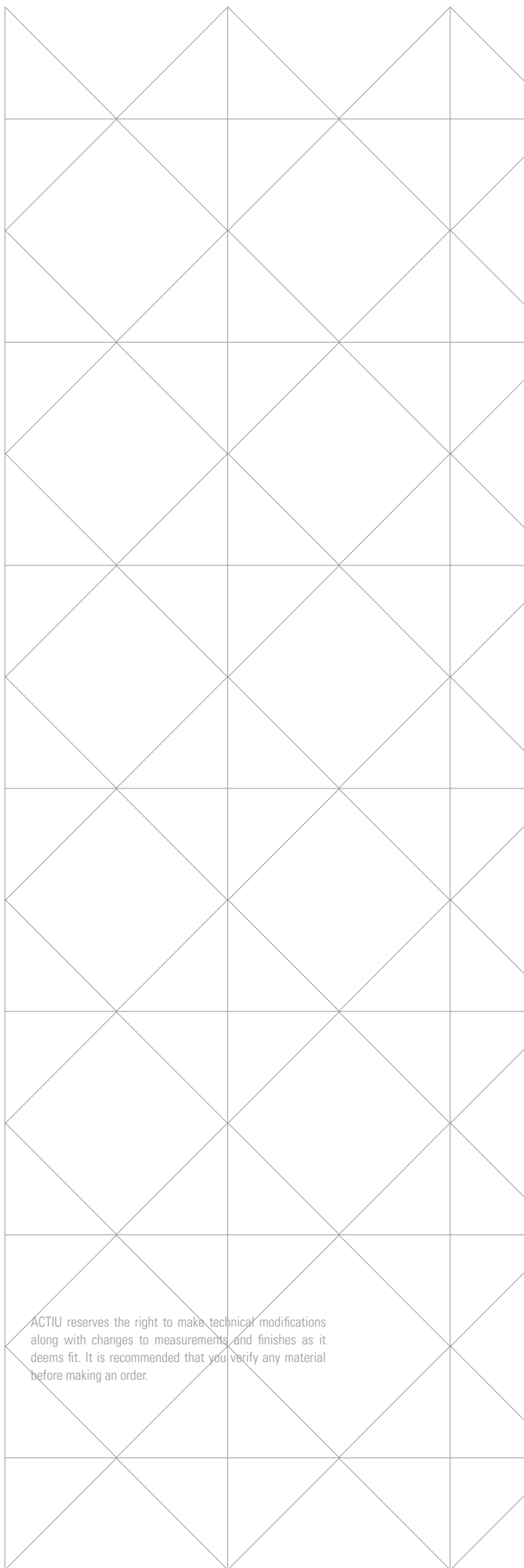
Versatile material with compact surface and soft inner. It is comfortable and solid, pleasant and resistance.

Elastomer to absorb impacts or constant movements.

Long lasting without any maintenance.

Great resistance to over weight as well as capacity to absorb impacts.

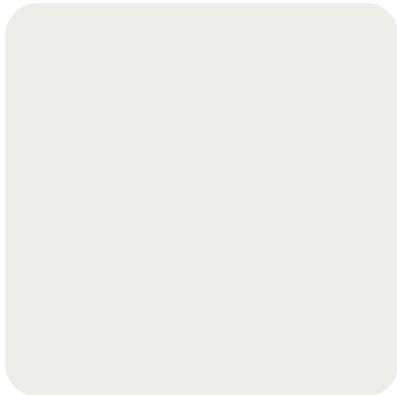
Polyurethane used by Actiu is resistant to grease, oil, cracks and tears. All standard pieces fulfill DIN 9835 quality requirements.



ACTIU reserves the right to make technical modifications along with changes to measurements and finishes as it deems fit. It is recommended that you verify any material before making an order.

THERMOPLASTIC

- AVAILABLE FOR: WHASS, WING AND URBAN
- AVAILABLE FOR: NOOM AND SPACIO
- AVAILABLE FOR: BEE

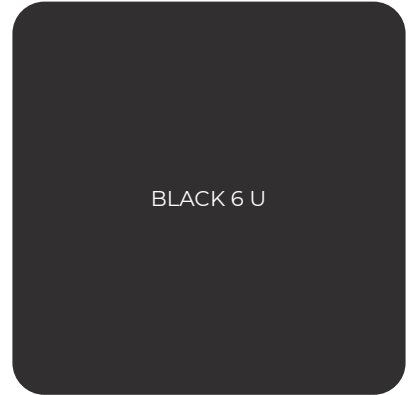


00 WHITE



2331 U

21 GREY



BLACK 6 U

10 BLACK



555 U

18 GREEN



583 U

25 PISTACHIO



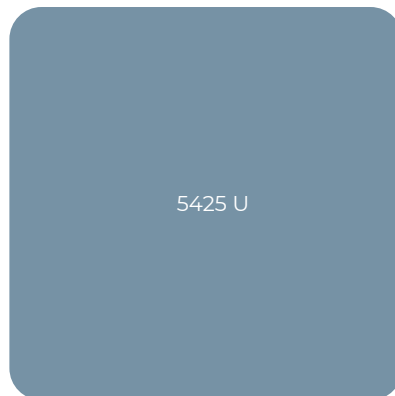
7555 U

24 MUSTARD



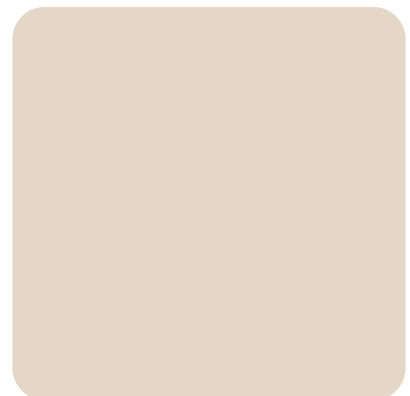
2161 U

19 DARK BLUE

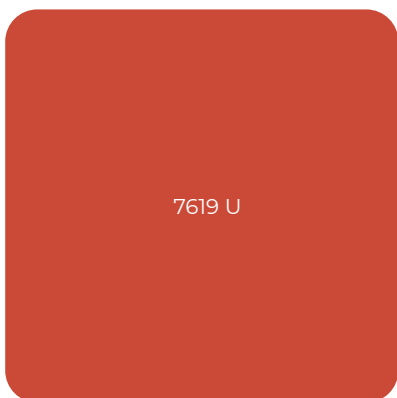


5425 U

13 LIGHT BLUE



P20 MINK



7619 U

16 BRICK RED



7607 U

17 CORAL RED





THERMOPLASTIC TECHNICAL SPECIFICATIONS

COPOLYMÈRE POLYPROPYLÈNE (PP) + FIBER GLASS:

Additives with antistatic, antioxidant and UV stabilisers.

A high impact elastomer is used in elements which support a moderate effort (backs, seats and armrests)

Excellent behaviour under tension and stretching.

Mechanical resistance. High flexibility. Excellent weather resistance. Reduced crystallisation; unaffected by environmental stress cracking. Good chemical and water resistance properties. It does not affect the environment by its absence of chemicals and adhesives.

ABS:

Thermoplastic derivative from a glassy polymer (styrene-acrylonitrile) and an elastic compound, butadiene.

ABS is a plastic stronger than polystyrene and it stands out for resistance to tension and impact. Good mechanical, thermal and chemical resistance. Resistance to fatigue.

Strength and robustness. Low temperature ductility. Melting resistance. Brightness. Strength and robustness. Non-toxic and colourless. It can be extruded, molded by injection, blowing and pressing.

POLYAMIDE (PA) + FIBER GLASS:

Additives with antistatic, antioxidant and UV stabilisers. Level 6 (1 to 10).

Composition which supports impacts superior to polypropylene (PP), with a greater robustness and superficial hardness. It is used in components which require high resistance to impact, especially in bases and mechanisms.

ACTIU reserves the right to make technical modifications along with changes to measurements and finishes as it deems fit. It is recommended that you verify any material before making an order.

ECO THERMOPLASTIC



P50 WHITE



P71 GREY



P60 BLACK



P68 GREEN



P74 MUSTARD



P76 SAND BEIGE



ECO THERMOPLASTIC TECHNICAL SPECIFICATIONS

POLYPROPYLENE (PP) + FIBER GLASS:

100% RECYCLED product made from recovered materials: manufactured with 100% recycled thermoplastic material (post-consumer mainly from fruit crates) and 100% recycled fiberglass (from industrial scrap) (both recyclable).

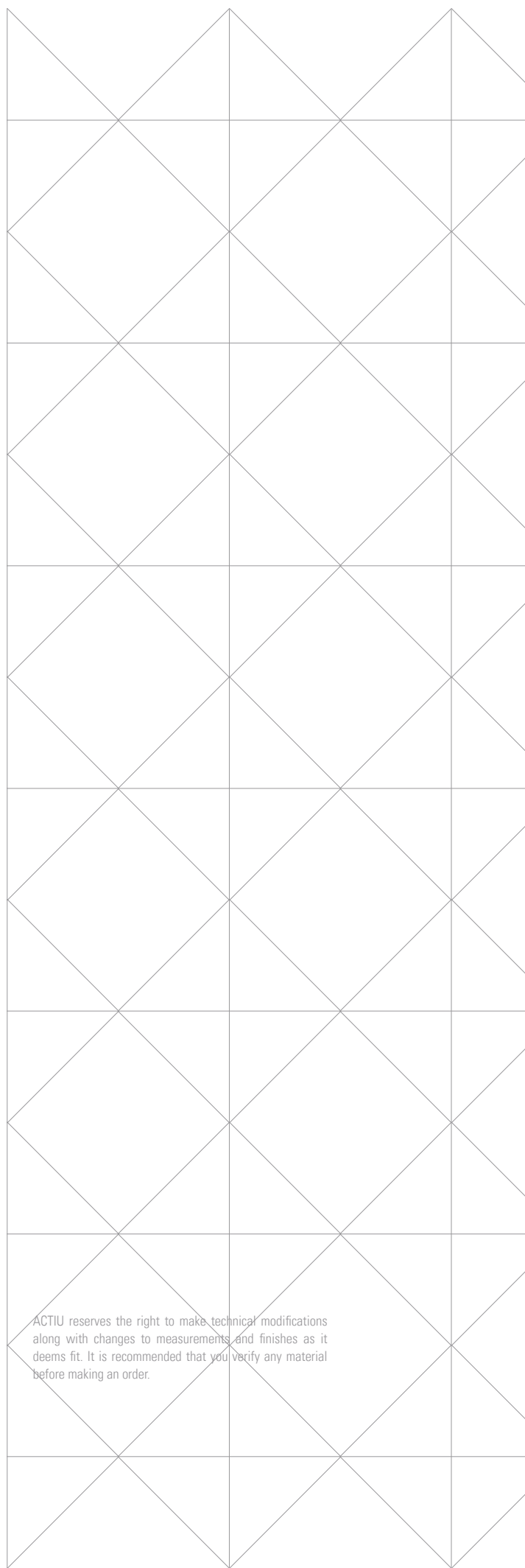
The different particles present in the plastic granules resin have different melting points as a result of the characteristics of the recovered raw material, and have an irregular surface finish that recreates the naturalness of a recovered product, providing uniqueness and value to the design.

Additives with antistatic, antioxidant and UV stabilisers.

A high impact elastomer is used in elements which support a moderate effort (backs, seats and armrests)

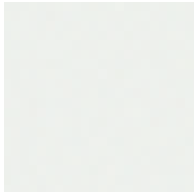
Excellent behaviour under tension and stretching.

Mechanical resistance. High flexibility. Excellent weather resistance. Reduced crystallisation; unaffected by environmental stress cracking. Good chemical and water resistance properties. It does not affect the environment by its absence of chemicals and adhesives.



ACTIU reserves the right to make technical modifications along with changes to measurements and finishes as it deems fit. It is recommended that you verify any material before making an order.

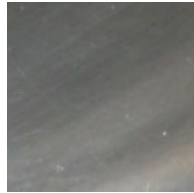
METAL



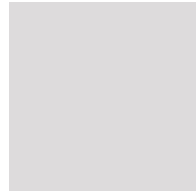
00/70 WHITE



05 DARK BLUE



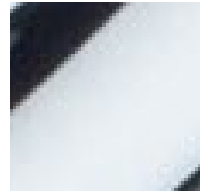
07 SILVER POLISHED



01 GRIS



15 PISTACHIO



09 CHROME



02/72 SILVER



14 ORANGE



10/78 BLACK



77 BURGUNDY



TECHNICAL SPECIFICATIONS METAL

All metal components, aluminum or steel, have epoxy-polyester finish. No toxic or solvent elements. Chromed finished is done over treated steel.

PAINTING FEATURES

1 – Electrostatic coat, epoxy bonding 2nd generation. Polymerized 200°C with nano-ceramics and non-grease treatments to improve better covering and provide then better resistance and lasting.

2 – Coating 80-90 micron thickness (it could be different as per the project requirements).

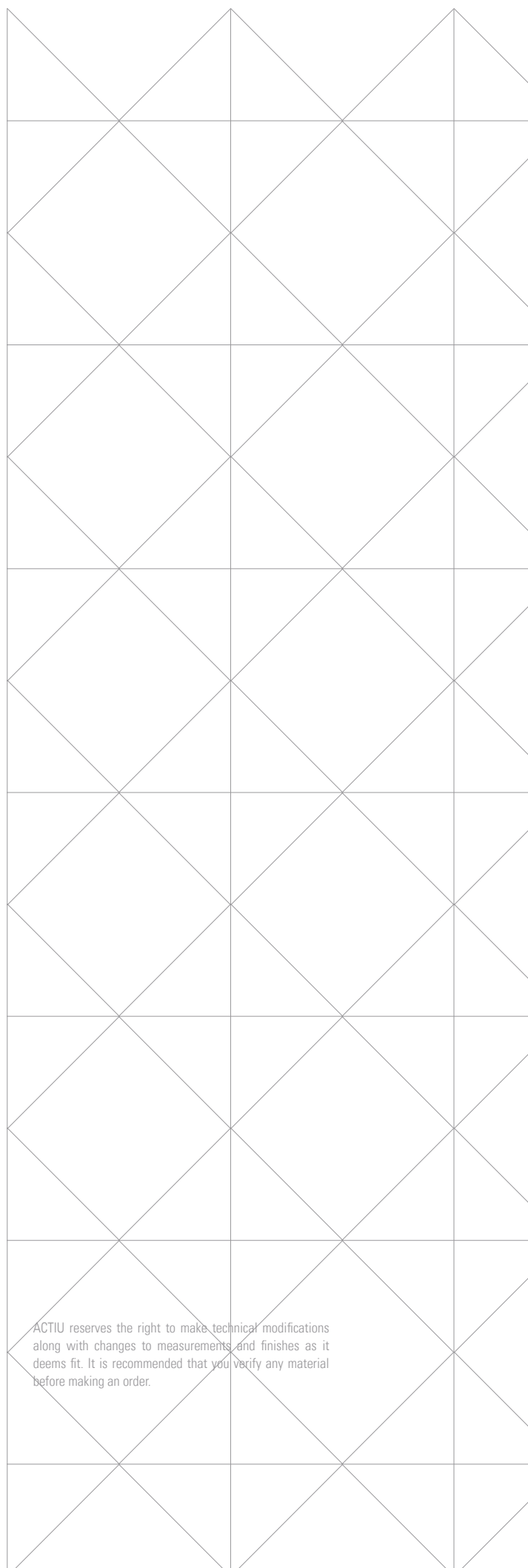
This covering guarantees the finish and maintenance of metal structures.

3 – Painting process:

Actiu painting plant has minimum environmental impact against the traditional industry processes.

Treatment is done by polarized coating and compacted with temperature. We get homogeneous and regular application with 98% of painting and the remaining 2% is used to produce other paints. Paints used are COVs free (Volatile Organic Components) which are very dangerous for the environment. All water used in the process is re-used, so we get zero dump.

4 – Antibacterial finish (Optional)



ACTIU reserves the right to make technical modifications along with changes to measurements and finishes as it deems fit. It is recommended that you verify any material before making an order.

WOOD

Care and protection of wood.

Scratches: Use a protector that protects surfaces against marks, scratches and Lift objects up whenever possible. The majority of scratches are made by dragging objects across the wood.

Plastic and Rubber: Some plastics contain components that contain soft material. When you put some wooden objects on this which contain some components which may damage the finish, resulting in shades or prints. To avoid this, use felt or leather mats on the table. Do not use mats covered in plastic. Avoid leaving plastic folders or files on the table preventing the wood "breathing".

Light effects: As with leather, wood changes over time. Light - affects wood which causes a change in colour. Each species of wood changes. Some adopt a warm tone while others become darker or lighter. Move objects and accessories frequently so as to avoid shadows on the wooden surface.

Reflection: Trees contain a "vascular" system of fibres which carry the sap to every corner. These fibres cause the wood to reflect light in different ways, depending on how it is made up. For example, a table and extension, having different fibres will look like different shades. But if you walk around, you will notice how the light changes on work surfaces and the effects of brightness and velvet on the wood.

Avoid temperatures and extreme humidity.

Clean with any Commercial products suitable for cleaning and maintenance for treated wood surfaces, wax basis, aliphatic hydrocarbon or seed oil surfactant.

Always wipe the surface in the direction of the grain.

Remove stains. Do not use products with silicon.

FABRICS

Each material has a specific feature, albeit technical or aesthetic.

If the stain has dried, try to remove the excess by hand or by using a brush.

Place a cleaner on the stain and continue with a PH neutral cleaner with a neutral cleaning agent such as soapy water. It is important to rinse with clean water.

Types of stains:

Oil: Treat with a solvent or treat with a colour fixing agent.

Alcohol: Fresh stains: Treat with a household vinegar and rinse immediately. Dried Stains: Treat with a whitening oxidizing agent.

Pen: Treat with a colour fixing agent.

Coffee: Fresh stains: Treat with household vinegar, and rinse immediately. Dried Stains: Treat with a whitening oxidizing agent.

Wax for furniture: Treat with a colour fixing agent.

Chewing gum: Treat with a solvent.

Chocolate: Fresh stains: Treat with soap or liquid soap for hands, rinse immediately or treat with solvent.

Cream: Fresh stains: Treat with soap or liquid soap for hands, rinse immediately.

Grease: Treat with a colour fixing agent.

Lip stick: Treat with a colour fixing agent or treat with a colour fixing agent.

Milk: Fresh stains: Treat with soap or liquid soap for hands, rinse immediately.

Butter: Treat with a colour fixing agent. Fresh stains: Treat with soap or liquid soap for hands, rinse immediately.

Urine: Fresh stains: Treat with soap or liquid soap for hands, rinse immediately.

Blood: Fresh stains: Treat with soap or liquid soap for hands, rinse immediately.

Tea: Fresh stains: Treat with household vinegar, and rinse immediately. Dried Stains: Treat with a whitening oxidizing agent.

Ink: Treat with a colour fixing agent.

Wine: Fresh stains: Treat with household vinegar, and rinse immediately. Dried Stains: Treat with a whitening oxidizing agent.

Fruit juice: Treat the stain with a whitening oxidizing agent or treat with a colour fixing agent.

LEATHER

Leather is a natural material, probably the toughest upholstery and requires specific care.

Wipe gently. Use a cream once or twice a year. Do not use shoe polish.

Types of stains.

Water: Soak and leave to dry before brushing.

Pen: Alcohol 90%

Coffee: Mix water with a little ammonia.

Grease: Apply a grease solvent spray. Leave to dry. Brush.

Wax stains: Apply a grease solvent spray. Leave to dry. Brush.

Other stains: Consult with a specialist.

Pen: Warm skimmed milk and lemon juice.

Water based felt-tips: Water and if necessary a little bit of lemon.

Permanent Ink: Cannot be removed

It is recommended that you clean the upholstery every two weeks, to prevent an accumulation of dirt (for example skin particles that can be inserted into the fabric.)

Visitors chairs need less cleaning than work chairs which are used daily.

It is essential to use a soft fibre brush on a vacuum to prevent damage to the fabric surface.

The dried in dirt on the surface will disappear after a thorough cleaning.

As for wet marks and stains that will not disappear after cleaning with a vacuum, we suggest the following solutions:

Mix water with a PH neutral cleaner. The temperature of the water must be between 25 and 35 degrees. A running liquid may also be used but don't overdose.

Clean the stains several times, using a soft fabric until they are no longer perceptible. It is essential not to use too much water and avoid soaking the foam, which could damage the chair.

After 3 washes, rinse with water.

Press with a dry fabric against the other fabric to remove the moisture as much as possible.

If the result is not completely satisfactory, repeat the process.

